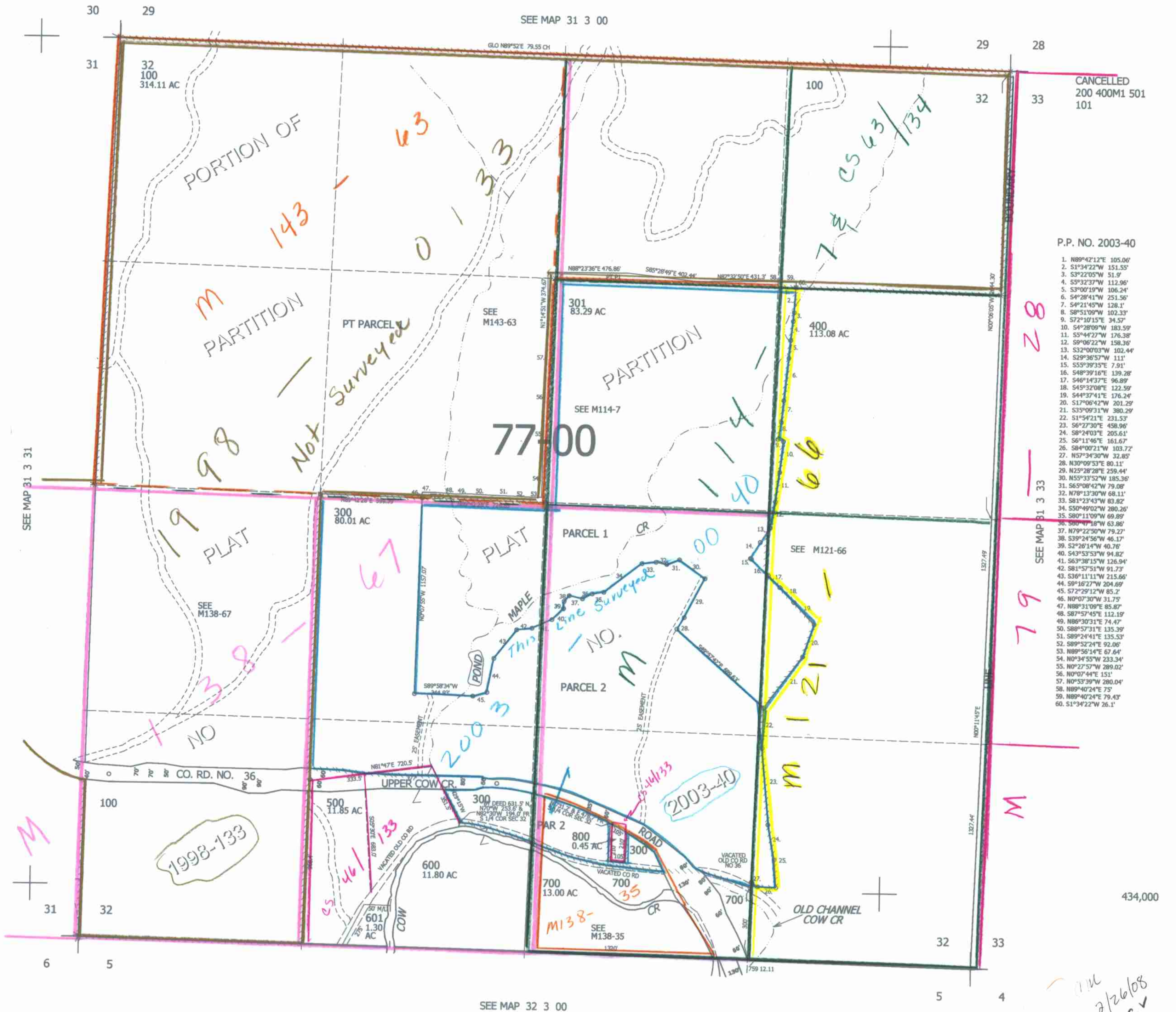


THIS MAP WAS PREPARED FOR
ASSESSMENT PURPOSE ONLY.

SEC.32 T31S. R.3W. W.M.
DOUGLAS COUNTY
1" = 400'

REVISED ON
2-20-08

31 3 32



CANCELLED
200 400M1 501
101

P.P. NO. 2003-40

1. N89°42'12"E 105.06'
2. S1°34'22"W 151.55'
3. S3°22'05"W 51.9'
4. S3°32'37"W 112.96'
5. S3°00'19"W 106.24'
6. S4°28'41"W 251.56'
7. S4°21'45"W 128.1'
8. S8°51'09"W 102.33'
9. S7°2'10"15"E 34.57'
10. S4°28'09"W 183.59'
11. S5°44'27"W 176.38'
12. S8°06'22"W 158.36'
13. S3°00'03"W 102.44'
14. S2°36'57"W 111'
15. S55°39'35"E 7.91'
16. S48°39'16"E 139.28'
17. S46°14'37"E 96.89'
18. S45°32'08"E 122.59'
19. S44°37'41"E 176.24'
20. S17°06'42"W 201.29'
21. S35°09'31"W 380.29'
22. S1°54'21"E 231.53'
23. S6°27'30"E 458.96'
24. S8°24'03"E 205.61'
25. S6°11'46"E 161.67'
26. S84°00'21"W 103.72'
27. N57°34'30"W 32.85'
28. N39°09'53"E 80.11'
29. N25°38'28"E 259.44'
30. N55°33'52"W 185.36'
31. S65°08'42"W 79.08'
32. N78°13'30"W 68.11'
33. S81°23'43"W 83.82'
34. S50°49'02"W 280.26'
35. S80°11'09"W 69.89'
36. S80°47'18"W 63.86'
37. N79°22'50"W 79.27'
38. S39°24'56"W 46.17'
39. S2°26'14"W 40.78'
40. S43°53'53"W 94.82'
41. S63°38'15"W 126.94'
42. S81°57'51"W 91.73'
43. S36°11'11"W 215.66'
44. S9°16'27"W 204.69'
45. S72°29'12"W 85.2'
46. N0°07'30"W 31.75'
47. N88°31'09"E 85.87'
48. S87°57'45"E 112.19'
49. N86°30'31"E 74.47'
50. S88°57'31"E 135.39'
51. S89°24'41"E 135.53'
52. S89°52'24"E 92.06'
53. N89°56'14"E 67.64'
54. N0°34'55"W 233.34'
55. N0°27'57"W 289.02'
56. N0°07'44"E 151'
57. N0°53'39"W 280.04'
58. N89°40'24"E 75'
59. N89°40'24"E 79.43'
60. S1°34'22"W 26.1'

28

79

M

SEE MAP 31 3 33

SEE MAP 31 3 00

SEE MAP 31 3 31

SEE MAP 32 3 00

4,231,000

434,000

31 3 32

2/26/08
scv