

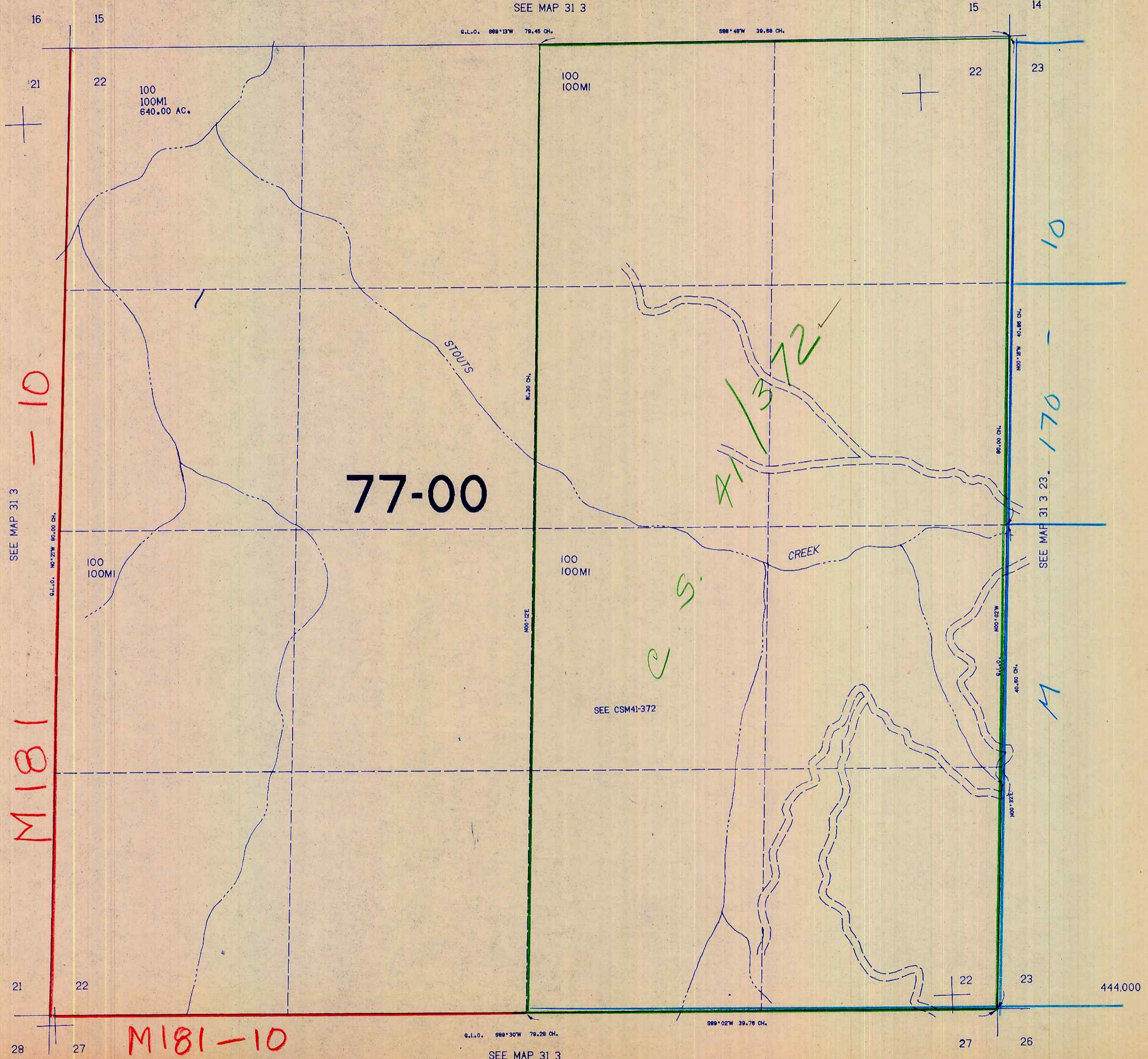
SECTION 22 T.31S. R.3W. W.M.
DOUGLAS COUNTY

31 3 22

THIS MAP WAS PREPARED FOR
ASSESSMENT PURPOSE ONLY.

1"=400'

SEE MAP 31 3



SEE MAP 31 3

M181

21 22 27 28

M181-10

77-00

SEE CSM41-372

11/3/72

CS

10

170

M

444.000

SEE MAP 31 3

31 3 22

1321.000

1/84/22