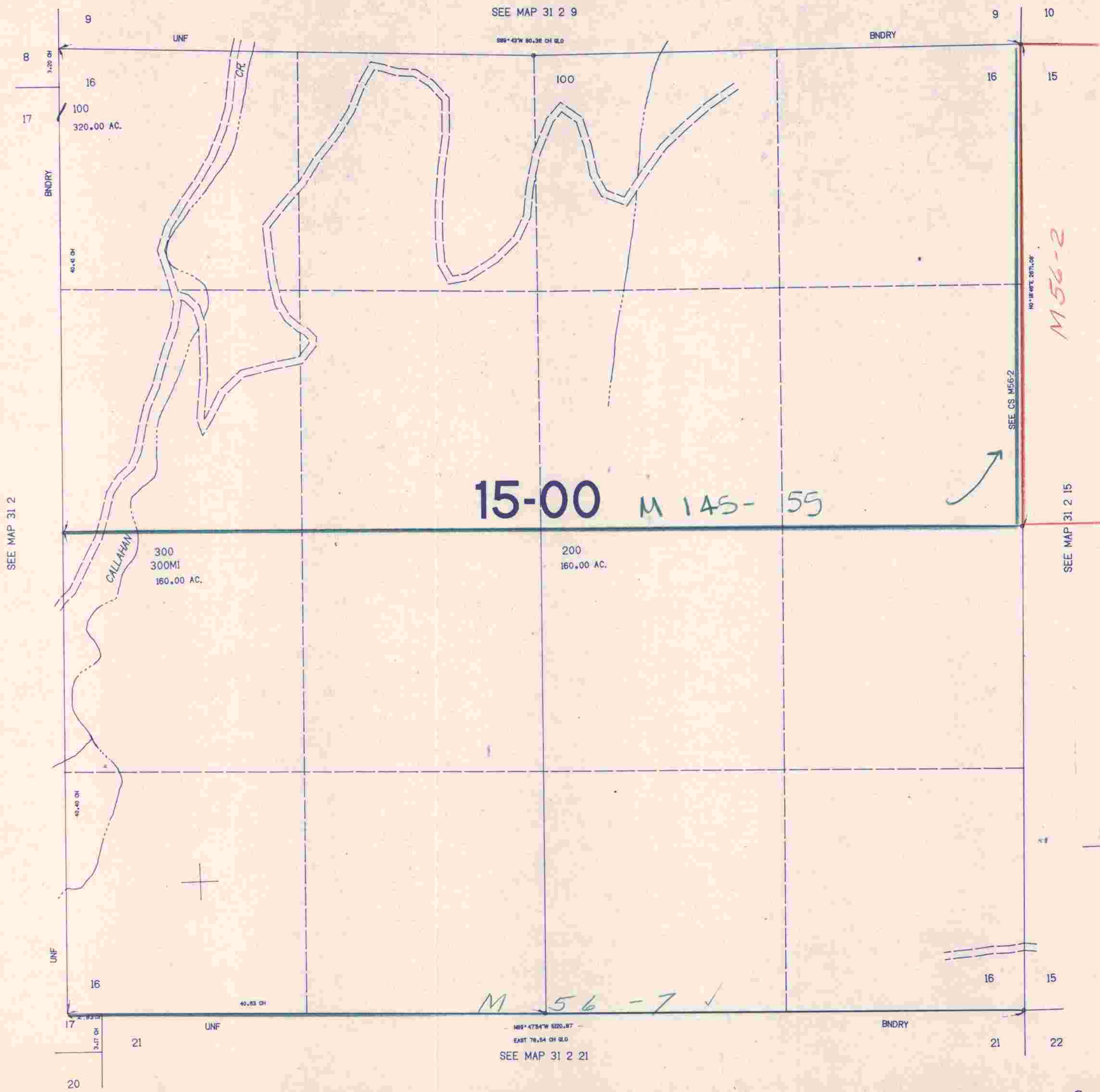


SECTION 16 T.31S. R.2W. W.M.
DOUGLAS COUNTY

31 2 16

THIS MAP WAS PREPARED FOR
ASSESSMENT PURPOSE ONLY.

1"=400'



M 56-2

15-00 M 145-55

M 56-7 ✓

450.000

31 2 16

1346.000

1/6/8