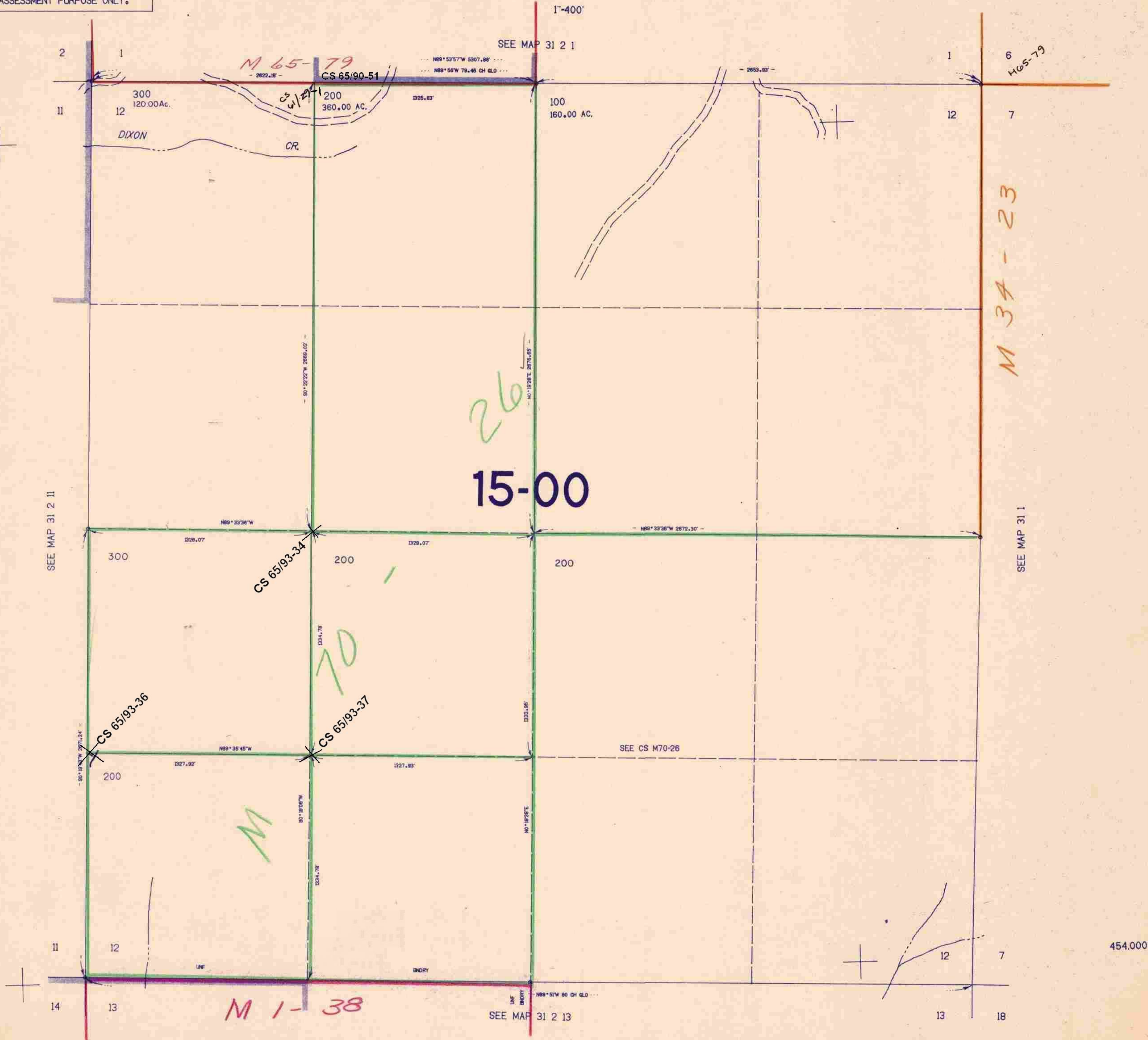


SECTION 12 T.31S. R.2W. W.M.
DOUGLAS COUNTY

31 2 12

THIS MAP WAS PREPARED FOR
ASSESSMENT PURPOSE ONLY.



SEE MAP 31 2 11

SEE MAP 31 2 13

SEE MAP 31 1

SEE MAP 31 2 13

454.000

31 2 12

1:361,000

1/27