

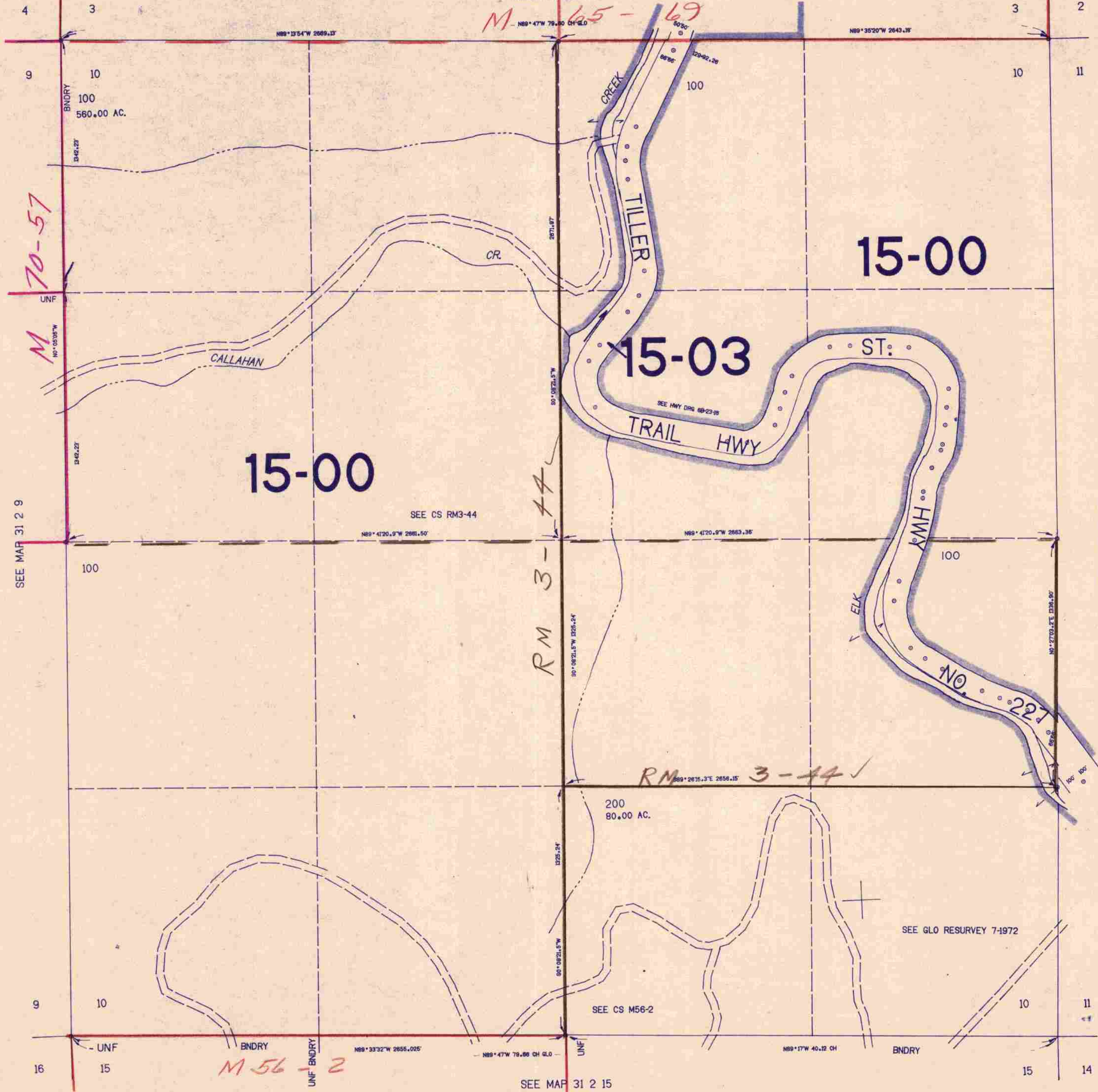
SECTION 10 T.31S. R.2W. W.M.
DOUGLAS COUNTY

31 2 10

THIS MAP WAS PREPARED FOR
ASSESSMENT PURPOSE ONLY.

1"=400'

SEE MAP 31 2 3



M 70-57

M 65-69

RM 3-44

RM 3-44

M 56-2

1:350,000

31 2 10

455.000

1/8/78