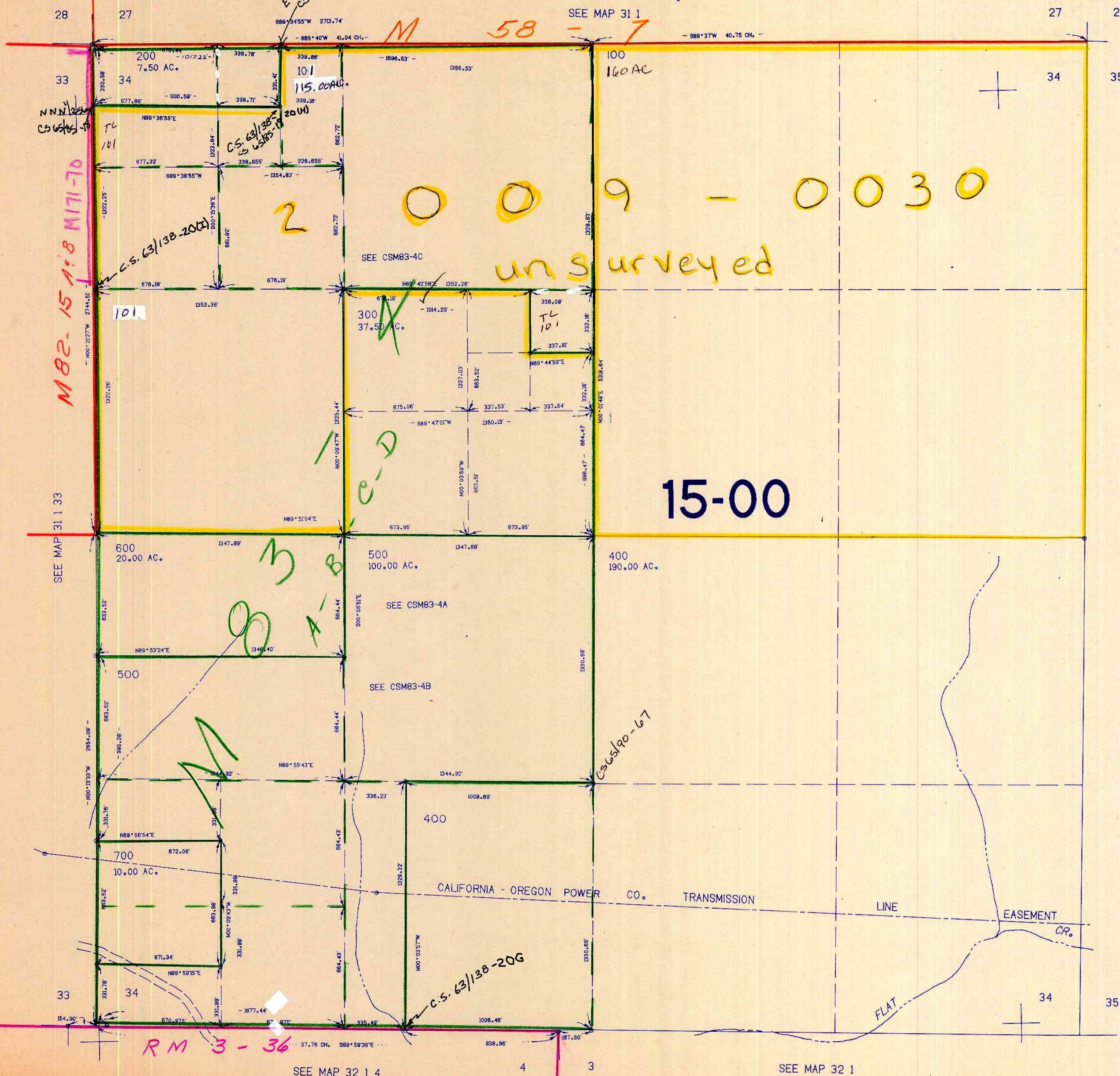


SECTION 34 T.31S. R.1W. W.M.  
DOUGLAS COUNTY

31 1 34

THIS MAP WAS PREPARED FOR  
ASSESSMENT PURPOSE ONLY.

1"=400'



28

27

27

26

33

34

34

35

SEE MAP 31 1 33

SEE MAP 31 1

SEE MAP 32 1 4

SEE MAP 32 1

432.000

1.382.000

31 1 34

1/84 AR