

THIS MAP WAS PREPARED FOR ASSESSMENT PURPOSE ONLY.

SEC.32 T31S. R.1W. W.M. DOUGLAS COUNTY

REVISED ON

31 1 32

1" = 400'

SEE MAP 31 1 29

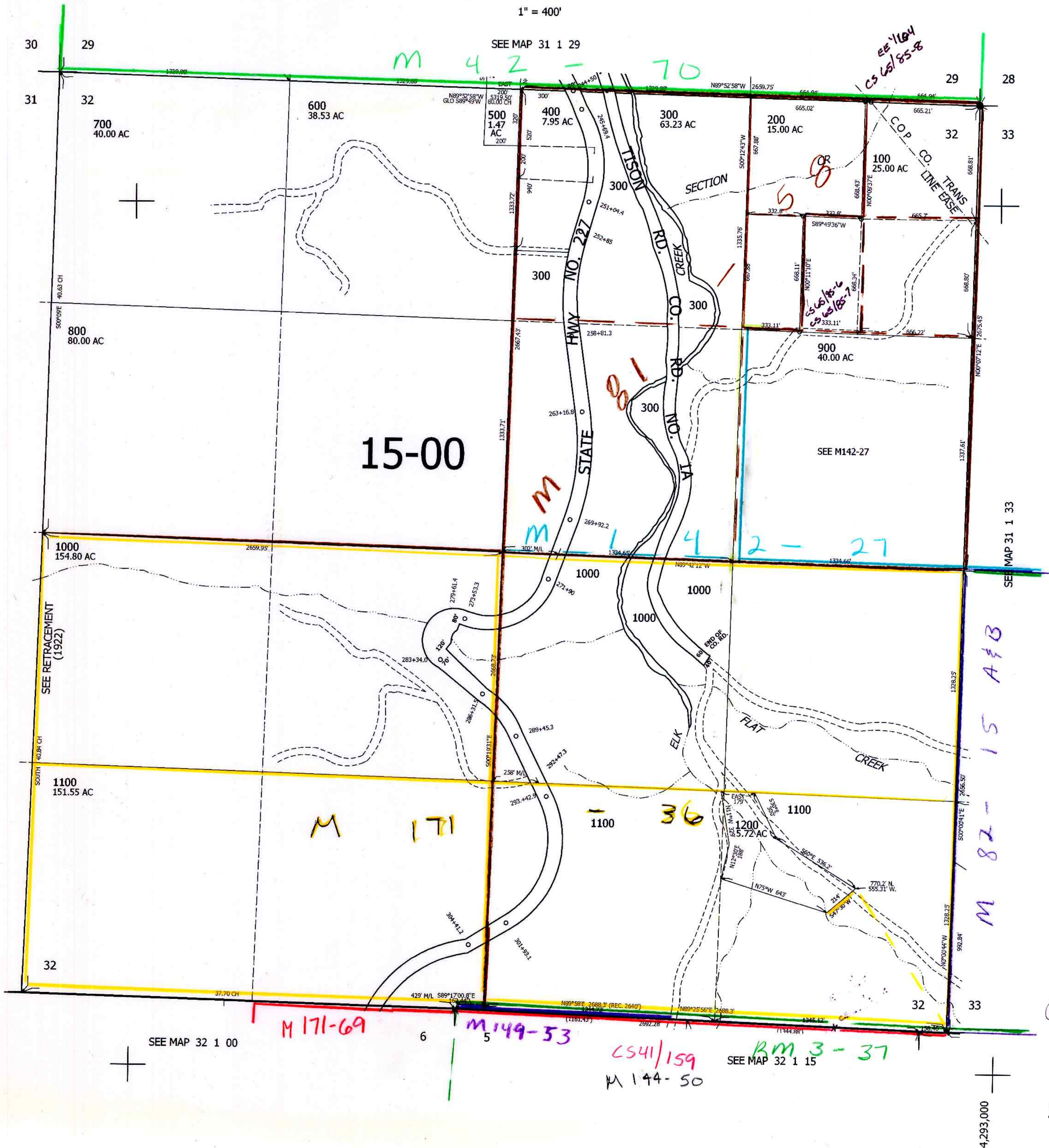
SEE MAP 31 1 00

SEE MAP 31 1 33

SEE MAP 32 1 00

SEE MAP 32 1 15

CANCELLED



CM
1/22/15
432,000

31 1 32

4,293,000