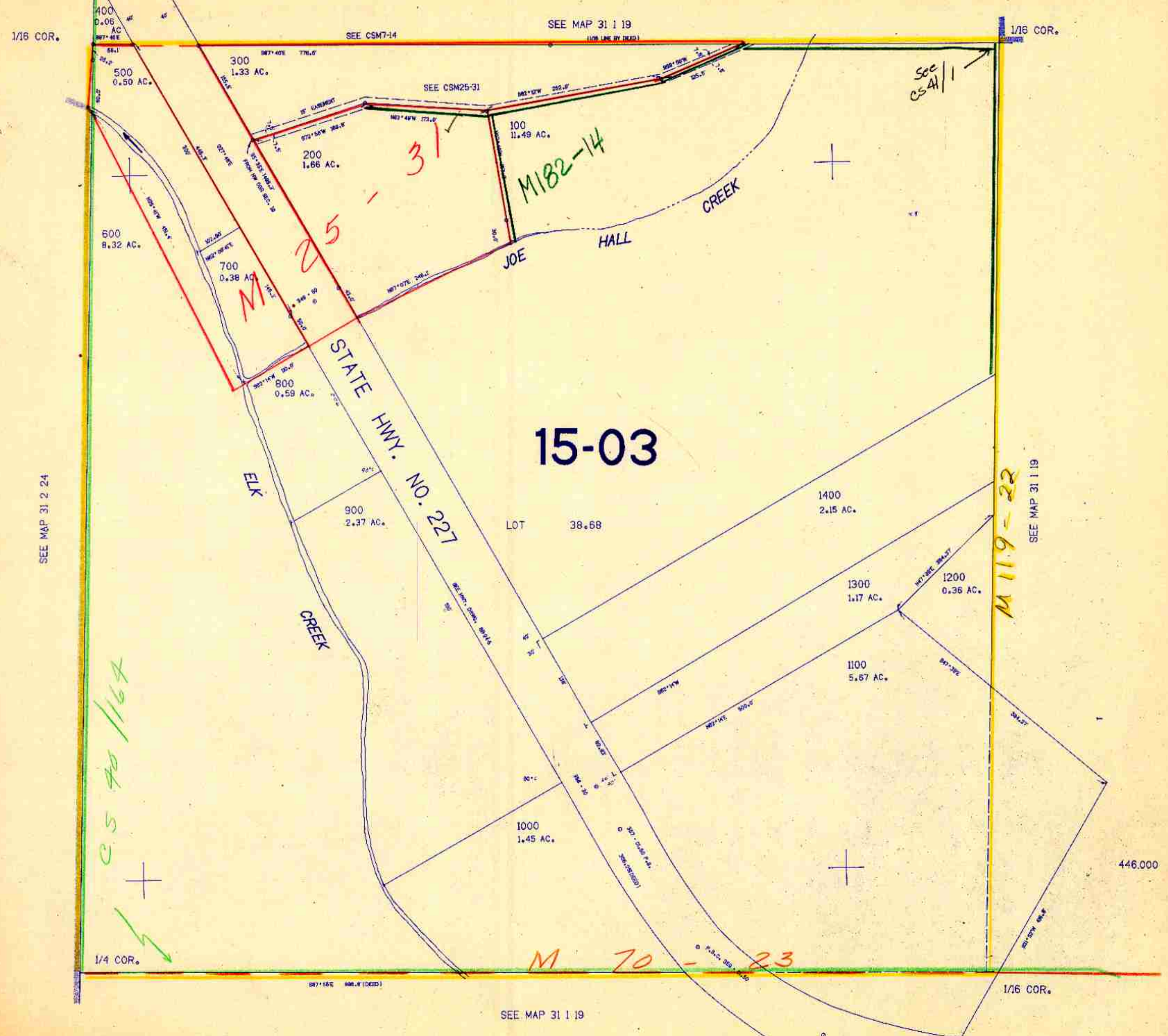


THIS MAP WAS PREPARED FOR ASSESSMENT PURPOSE ONLY.

SW1/4 NW1/4 SEC.19 T.31S. R.1W. W.M.  
DOUGLAS COUNTY

31 1 19BC

1"=100'



SEE MAP 31 2 24

C.S. 40-1164

15-03

M 119-22

M 70-23

SEE MAP 31 1 19

SEE MAP 31 1 19

1361500

31 1 19BC

1164