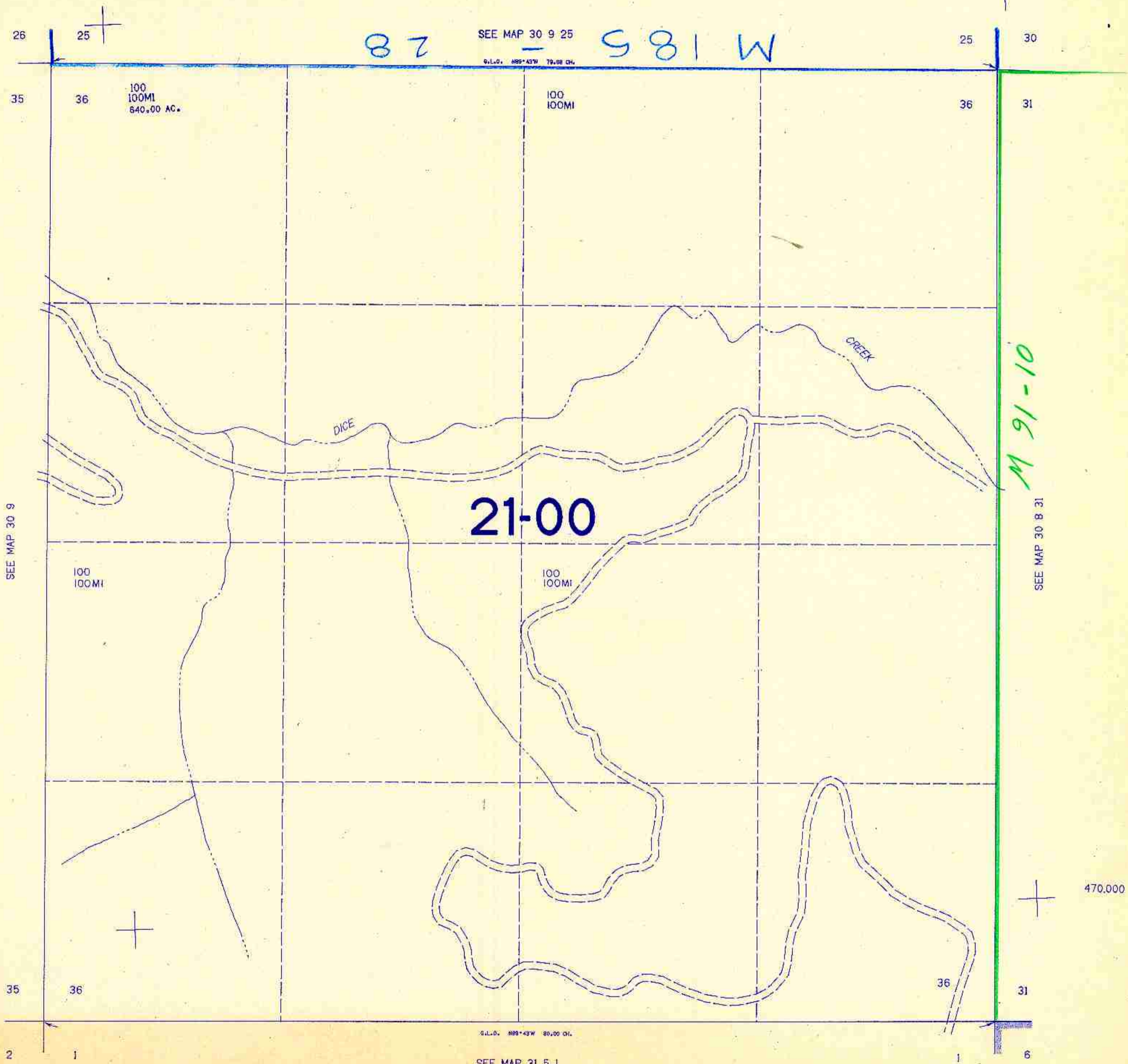


SECTION 36 T.30S. R.9W. W.M.  
DOUGLAS COUNTY

30 9 36

THIS MAP WAS PREPARED FOR  
ASSESSMENT PURPOSE ONLY.

1"=400'



87 SEE MAP 30 9 25 581 W

21-00

M 91-10

470.000

SEE MAP 31 5 1

30 9 36

7/84 68

1143000