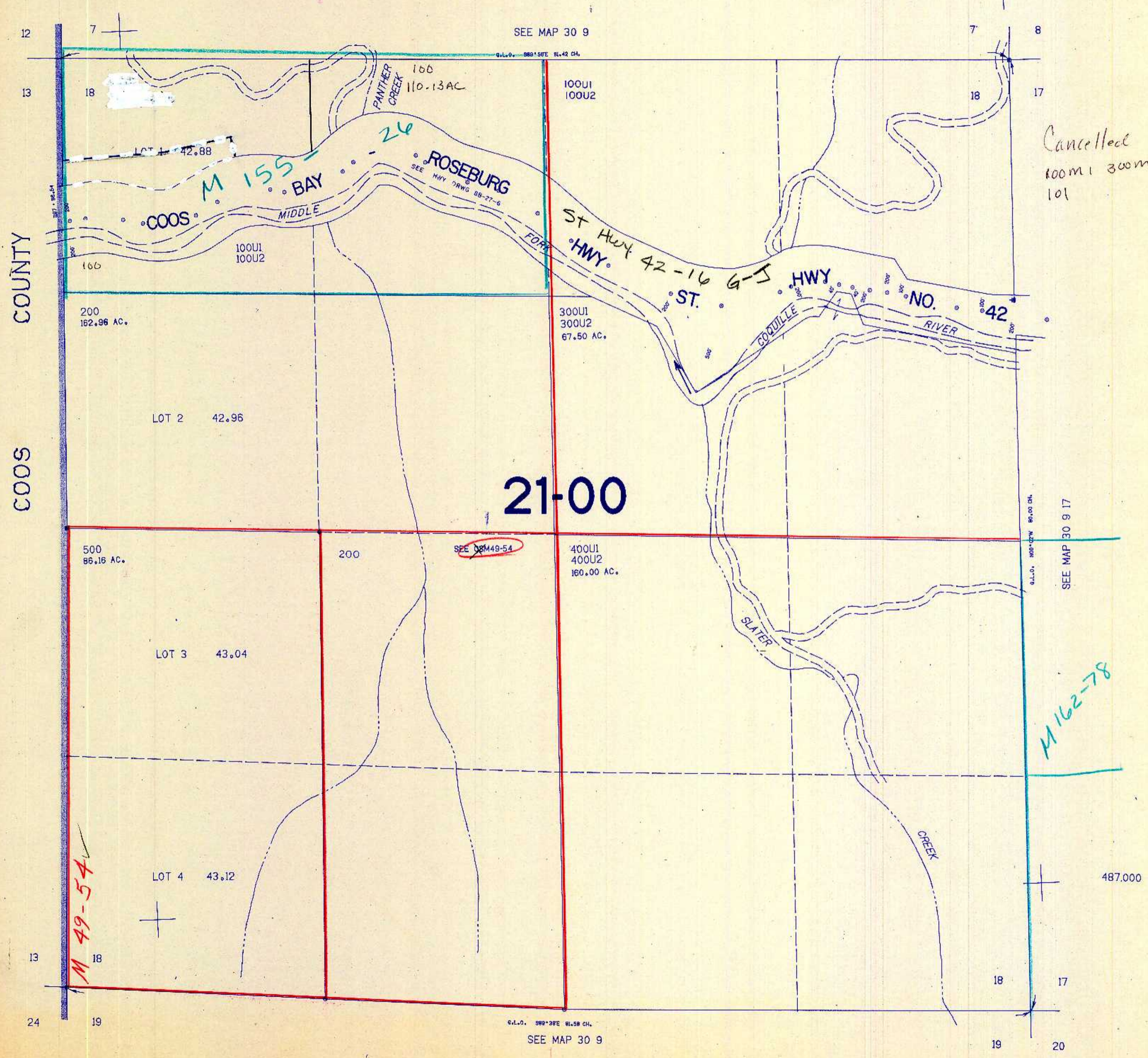


SECTION 18 T.30S. R.9W. W.M.
DOUGLAS COUNTY

30 9 18

THIS MAP WAS PREPARED FOR
ASSESSMENT PURPOSE ONLY.

1"=400'



Cancelled
100m | 300m | 400m
101

21-00

SEE M 49-54

M 162-78

M 49-54 ✓

COOS COUNTY

1:112,000

30 9 18

7/84
BS