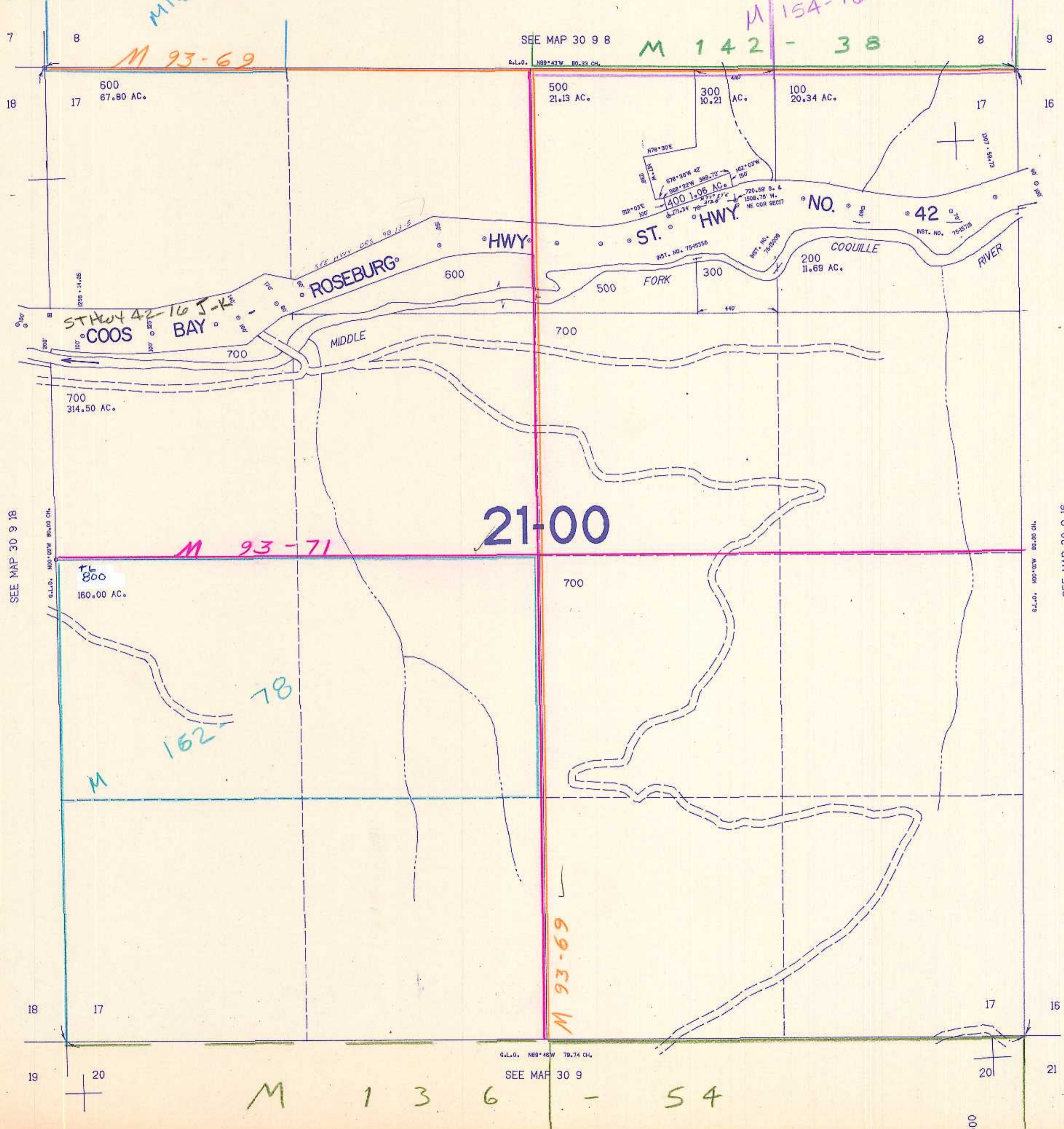


SECTION 17 T.30S. R.9W. W.M.
DOUGLAS COUNTY

30 9 17

THIS MAP WAS PREPARED FOR
ASSESSMENT PURPOSE ONLY.

1"=400'



SEE MAP 30 9 8

G.L.O. N89°43'W 80.21 CH.

HWY

ST.

NO.

42

COOUILLE

RIVER

ROSEBURG

FORK

MIDDLE

COOS BAY

21-00

M 93-71

M

M 162-78

M 93-69

M 136 - 54

SEE MAP 30 9 18

G.L.O. N01°02'W 80.00 CH.

G.L.O. N01°02'W 80.00 CH.

SEE MAP 30 9 16

G.L.O. N89°46'W 79.74 CH.

SEE MAP 30 9

486,000

1122,000

30 9 17

7/84 BS