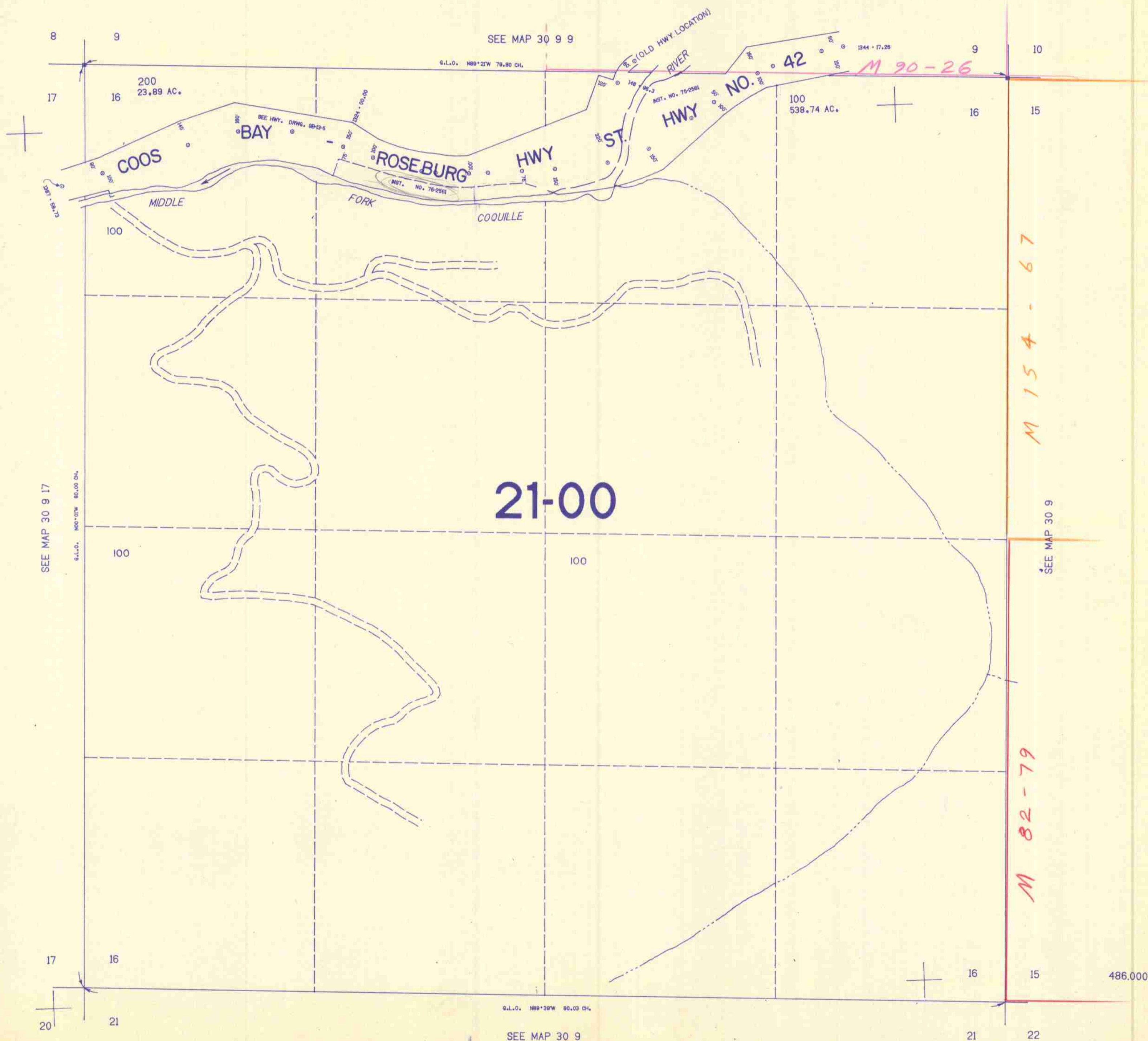


SECTION 16 T.30S. R.9W. W.M.
DOUGLAS COUNTY

30 9 16

THIS MAP WAS PREPARED FOR
ASSESSMENT PURPOSE ONLY.

1"=400'



21-00

M 90-26

M 154-67

M 82-79

486.000

1:127,000

30 9 16
7/84
BS