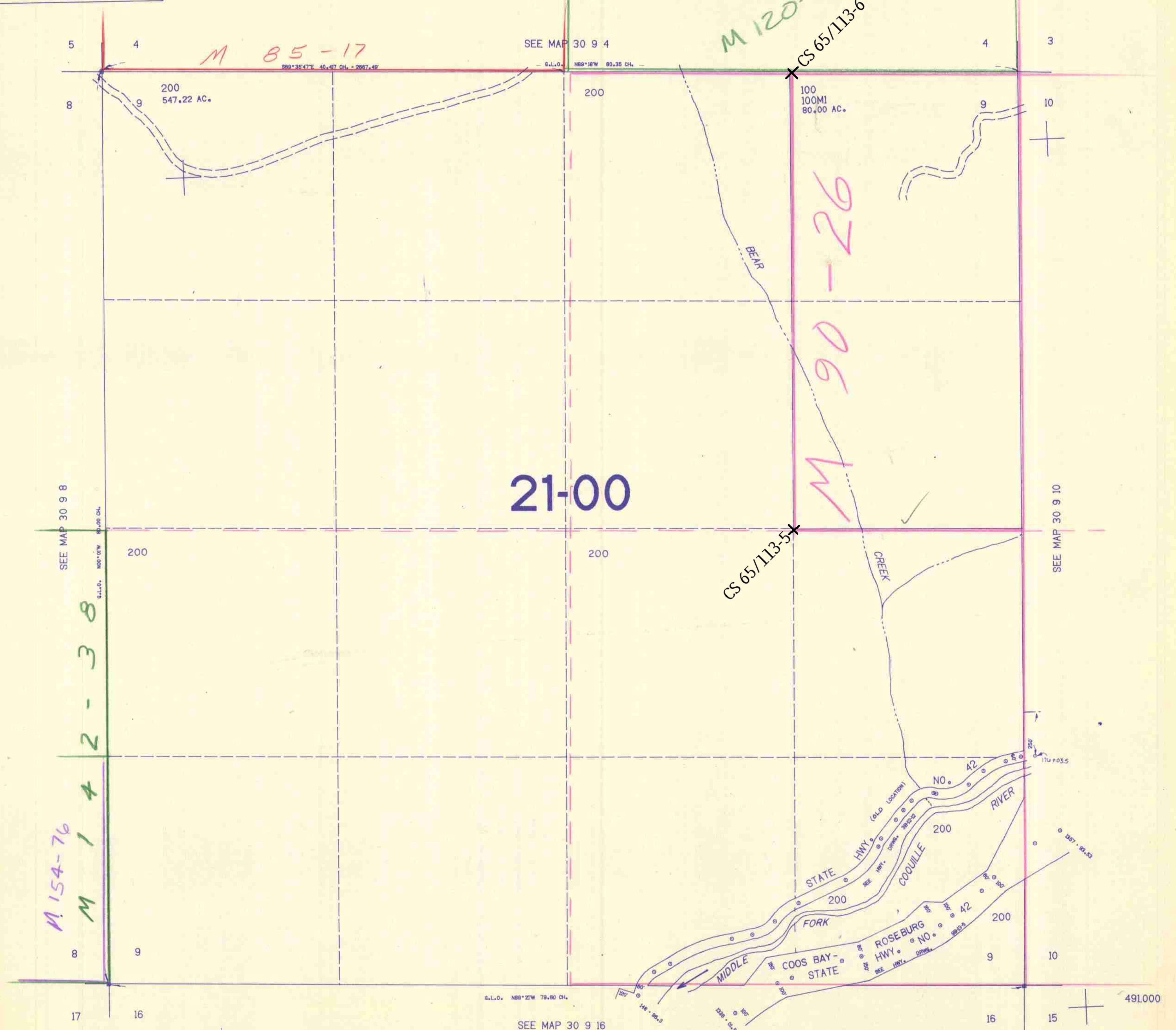


SECTION 9 T.30S. R.9W. W.M.
DOUGLAS COUNTY

30 9 9

THIS MAP WAS PREPARED FOR
ASSESSMENT PURPOSE ONLY.

1"=400'



5

4

SEE MAP 30 9 4

4

3

8

200
547.22 AC.

200

100
100MI
80.00 AC.

9

10

21-00

SEE MAP 30 9 8

200

200

SEE MAP 30 9 10

M 154-76
M 142-38

8

9

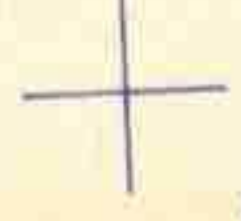
S.L.O. N88°21'W 79.80 CH.

SEE MAP 30 9 16

9

10

491.000



1123.000

30 9 9

7/84
68