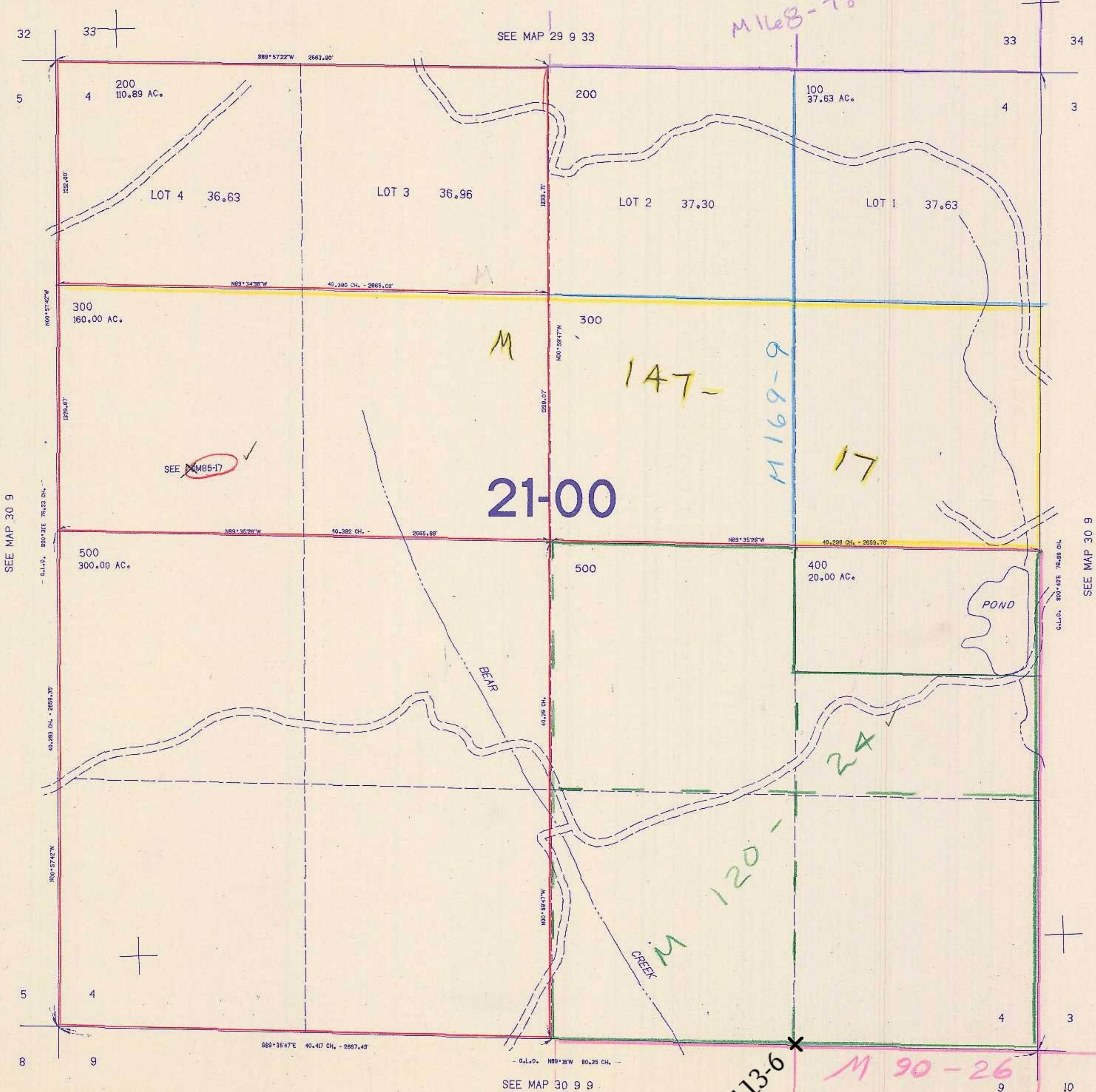


SECTION 4 T.30S. R.9W. W.M.  
DOUGLAS COUNTY

30 9 4

THIS MAP WAS PREPARED FOR  
ASSESSMENT PURPOSE ONLY.

1"=400'



21-00

CS 65/113-6

M 90-26

1123.000

497.000

30 9 4

7/84  
BS