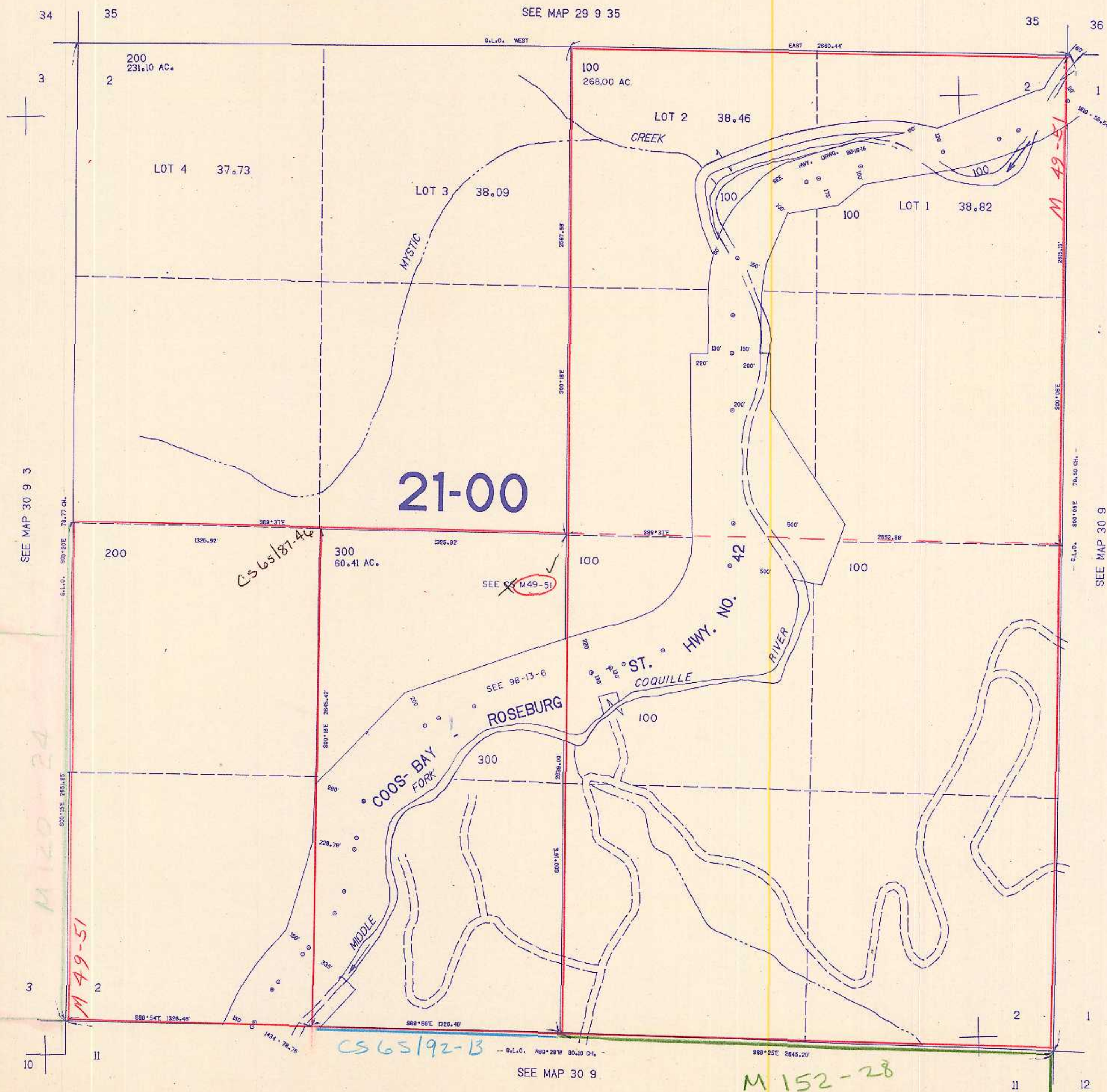


SECTION 2 T.30S. R.9W. W.M.
DOUGLAS COUNTY

30 9 2

THIS MAP WAS PREPARED FOR
ASSESSMENT PURPOSE ONLY.

1"=400'



SEE MAP 30 9 3

SEE MAP 29 9 35

SEE MAP 30 9

SEE MAP 30 9

M 120-24

M 49-51

CS 65/87-42

M 152-28

496.000

1138.000

30 9 2

7/84
BB