

COOS COUNTY

W 1/4 N Line CS 63/34-44  
N 1/4 W Line CS 63/34-45  
ADJACENT PURPOSE

1"-2000'

RM. 1-36

54/6  
M137-50

C.S.

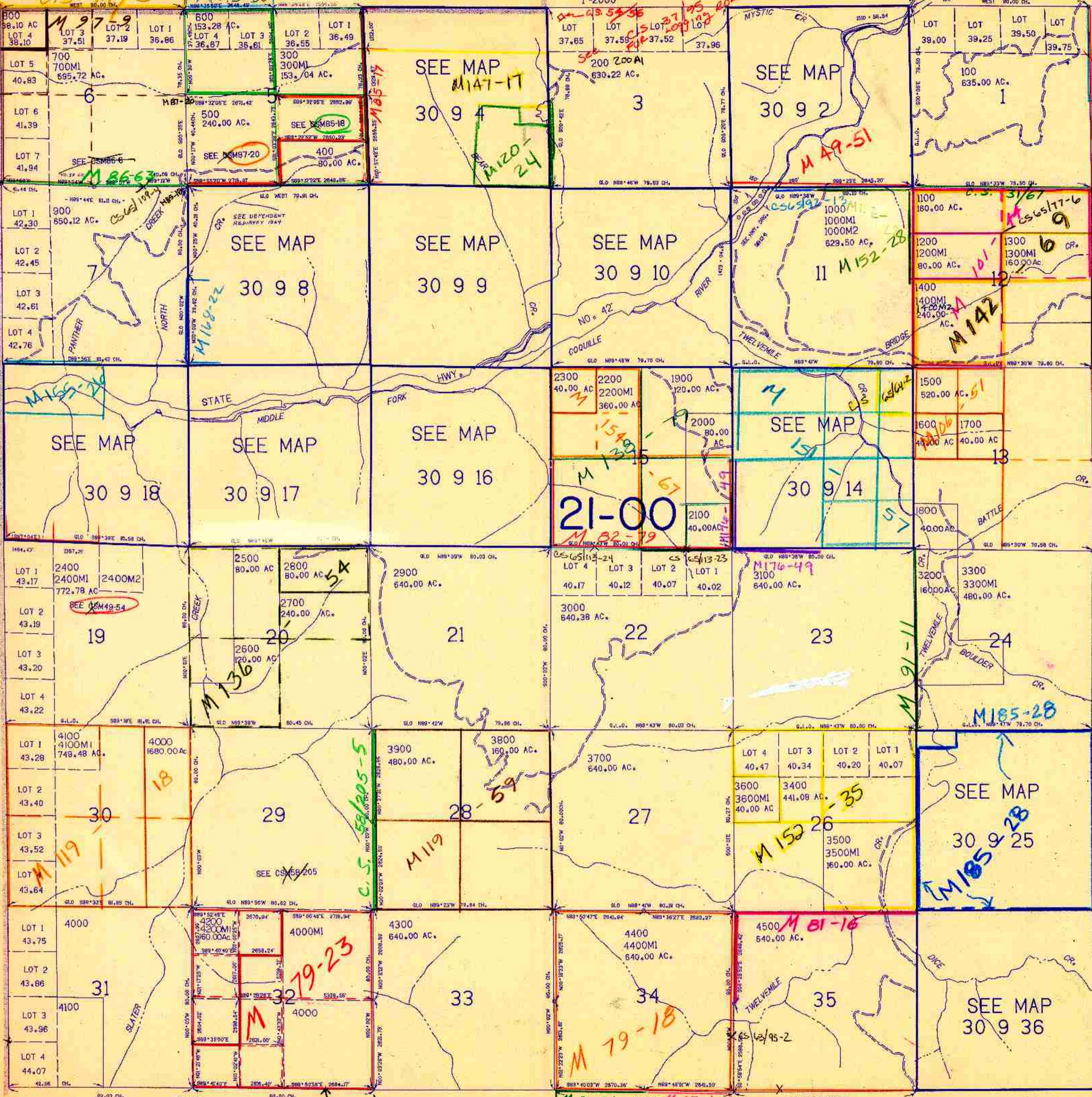
M178-73 A-D

M 49-16

M178-74 A-D

7/84  
68

COOS COUNTY



CS 63/104-3

CS 63/77-1

CS 63/34-47