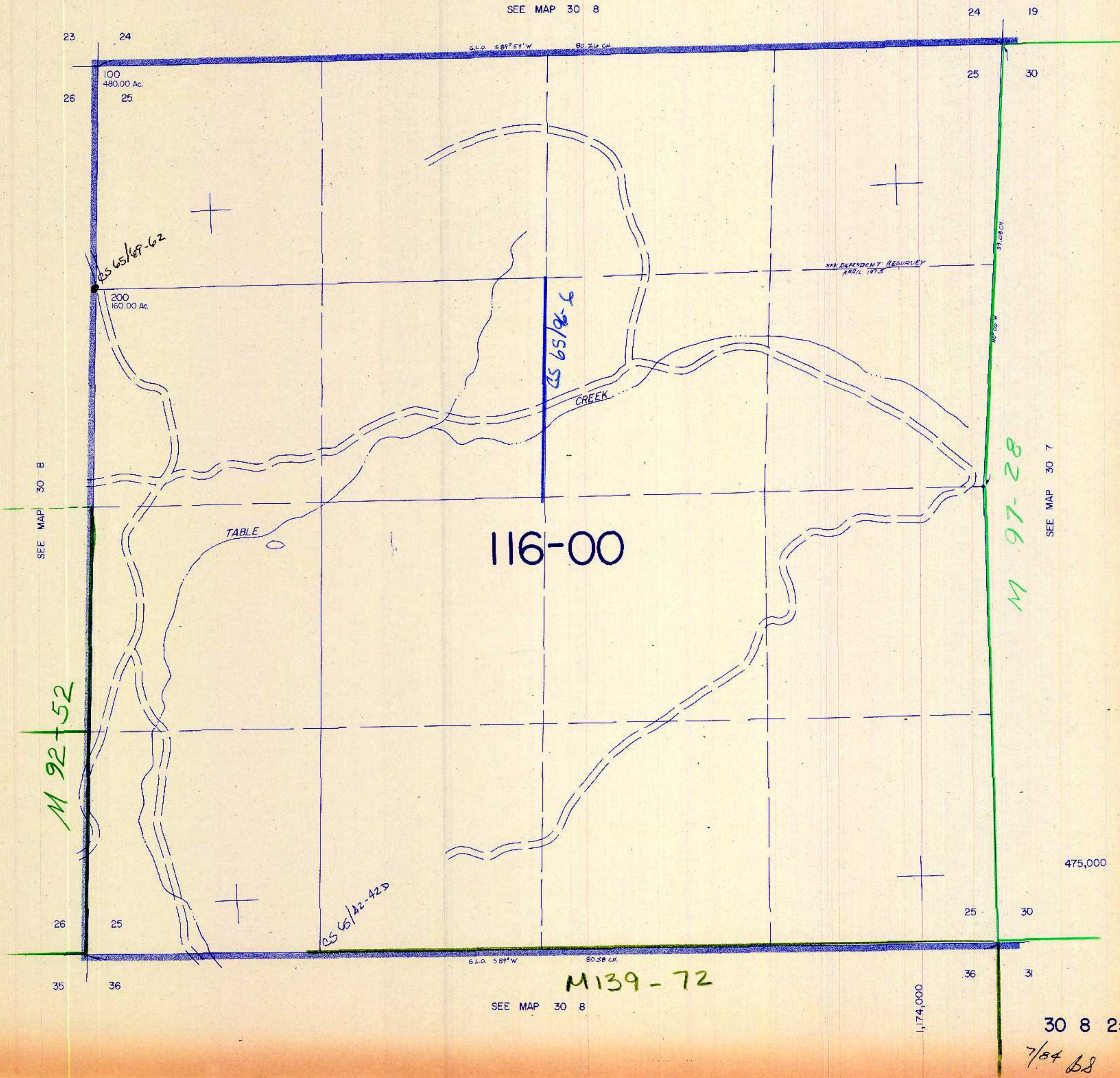


SECTION 25 T.30S. R. 8 W. W.M.
DOUGLAS COUNTY

30 8 25

1" = 400'

SEE MAP 30 8



SEE MAP 30 8

M 92-52

100
480.00 Ac.

200
160.00 Ac.

TABLE

116-00

M 139-72

CS 65/82-42D

CS 65/86-6

SEE DEPENDENT RESURVEY
APRIL 1975

M 97-28

SEE MAP 30 7

1,174,000

475,000

SEE MAP 30 8

30 8 25

7/04 BS