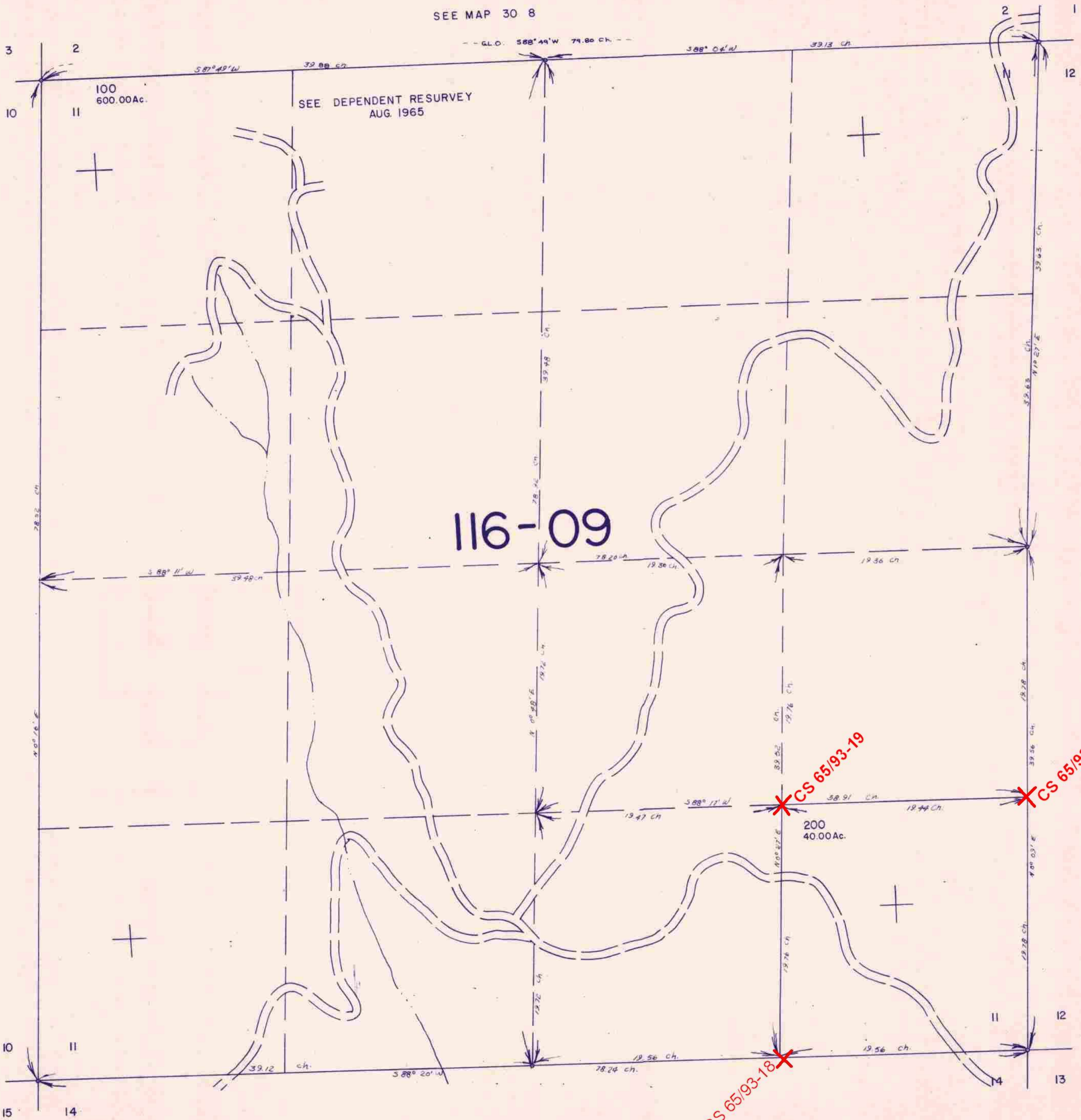


SECTION 11 T.30S. R. 8 W. W.M.
DOUGLAS COUNTY

1" = 400'

SEE MAP 30 8



SEE MAP 30 8

SEE MAP 30 8 12

116-09

CS 65/93-19

CS 65/93-20

CS 65/93-18

200
40.00Ac.

491,000

SEE MAP 30 8 14

1,169,000