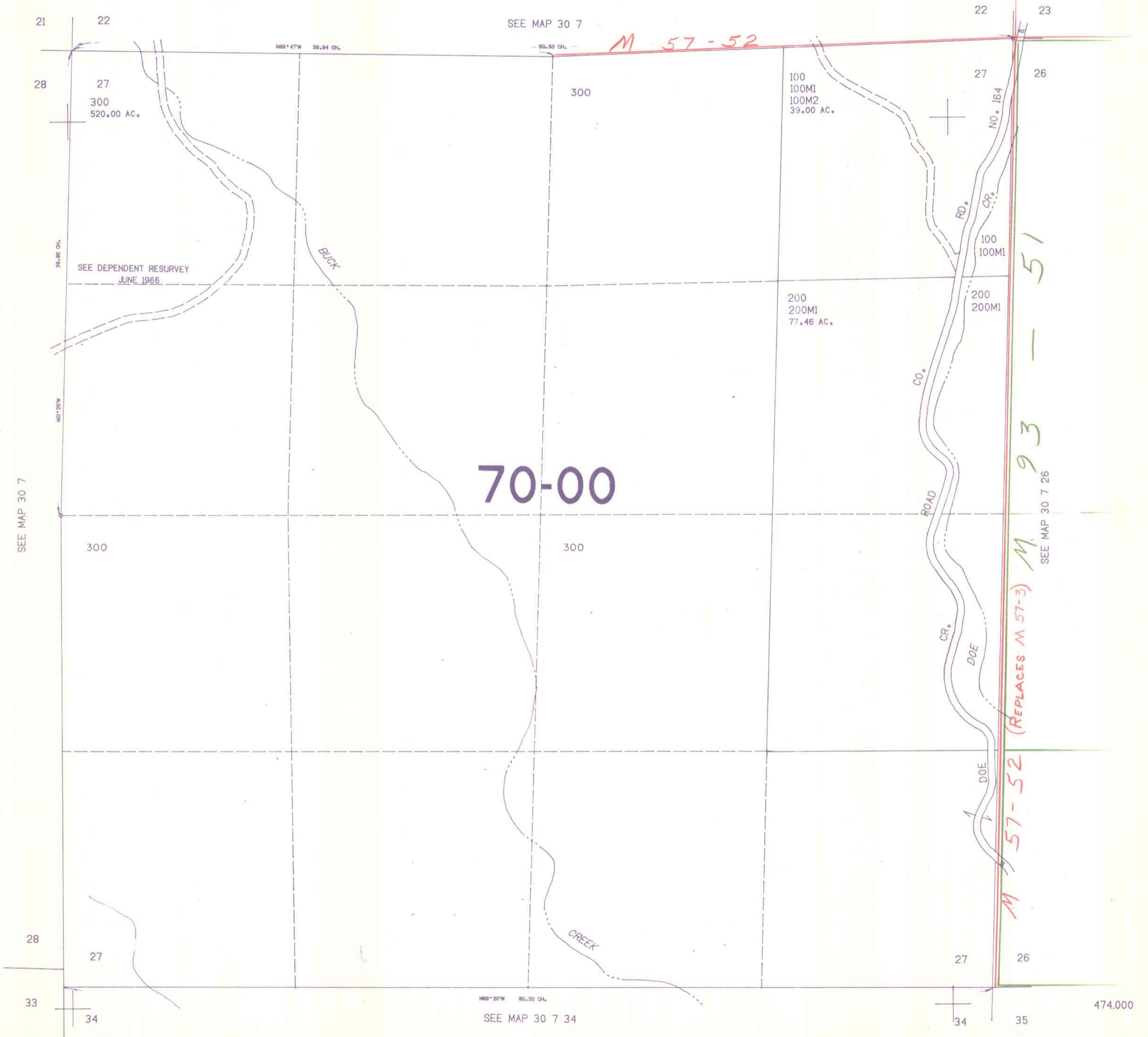


SECTION 27 T.30S. R.7W. W.M.
DOUGLAS COUNTY

30 7 27

THIS MAP WAS PREPARED FOR
ASSESSMENT PURPOSE ONLY.

1"=400'



SEE MAP 30 7

SEE MAP 30 7

SEE MAP 30 7 26

SEE MAP 30 7 34

1:195,000

474,000

30 7 27
7/84
BS