

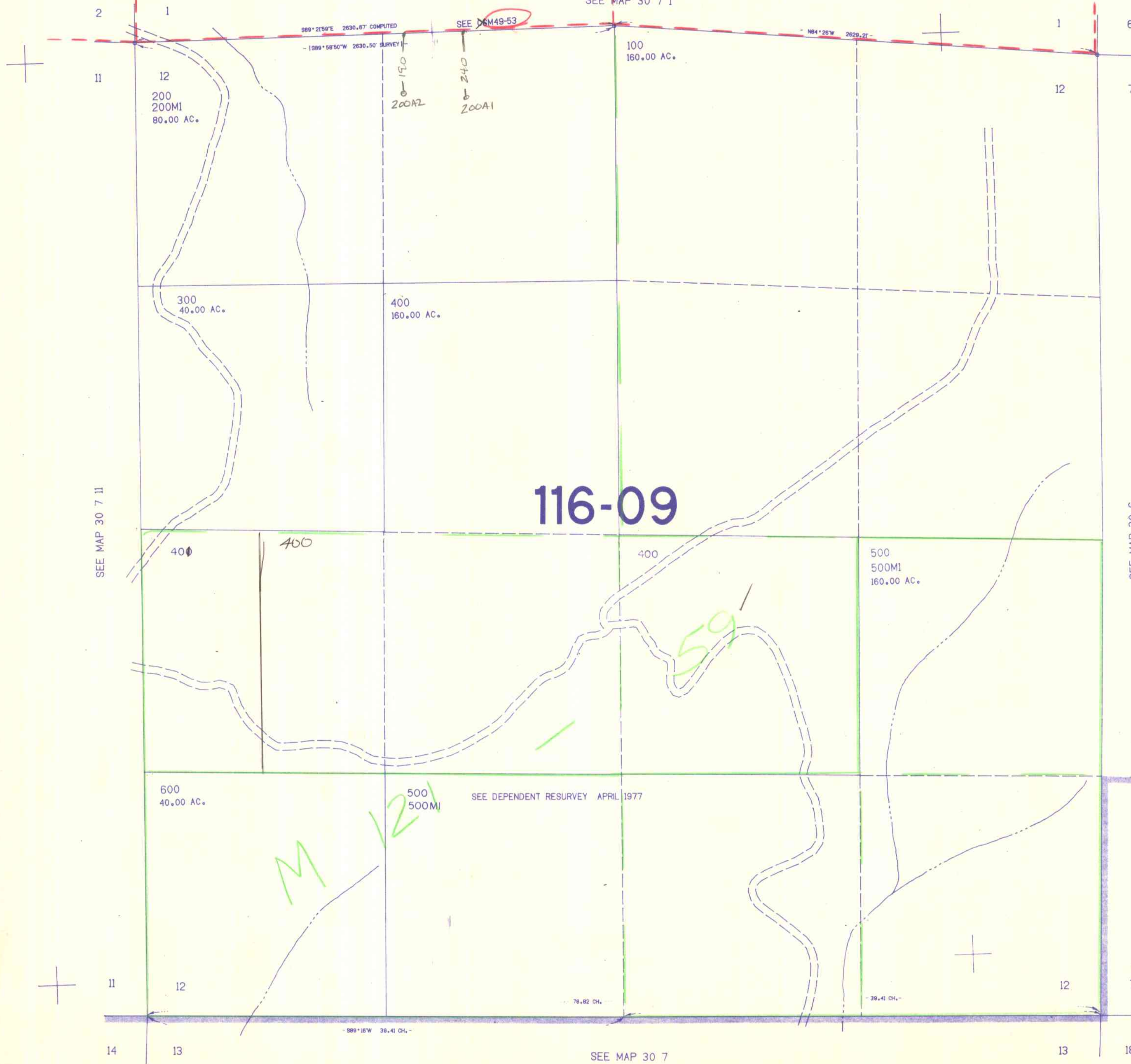
SECTION 12 T.30S. R.7W. W.M.
DOUGLAS COUNTY

30 7 12

THIS MAP WAS PREPARED FOR
ASSESSMENT PURPOSE ONLY.

1"=400'

SEE MAP 30 7 1



116-09

M 12

59

490.000

SEE MAP 30 7

1.206.000

30 7 12
7/84 BS