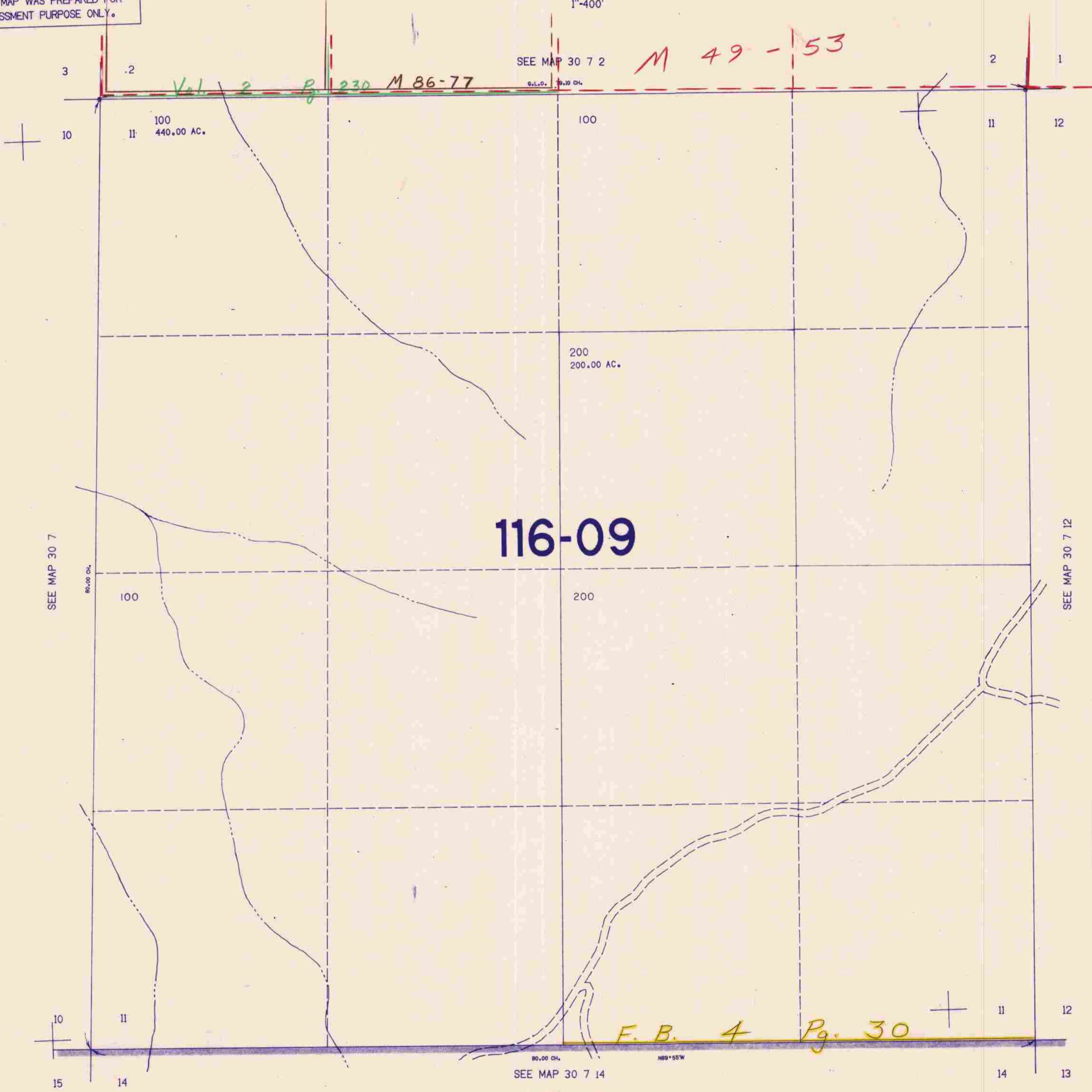


SECTION 11 T.30S. R.7W. W.M.  
DOUGLAS COUNTY

1"=400'

THIS MAP WAS PREPARED FOR  
ASSESSMENT PURPOSE ONLY.



116-09

Vol. 2 Pg. 230 M 86-77

M 49-53

F.B. 4 Pg. 30

SEE MAP 30 7

SEE MAP 30 7 2

SEE MAP 30 7 12

SEE MAP 30 7 14

100  
11  
440.00 AC.

100

200  
200.00 AC.

100

200

10  
11

11  
12

490.000

15  
14

14  
13

1:201,000