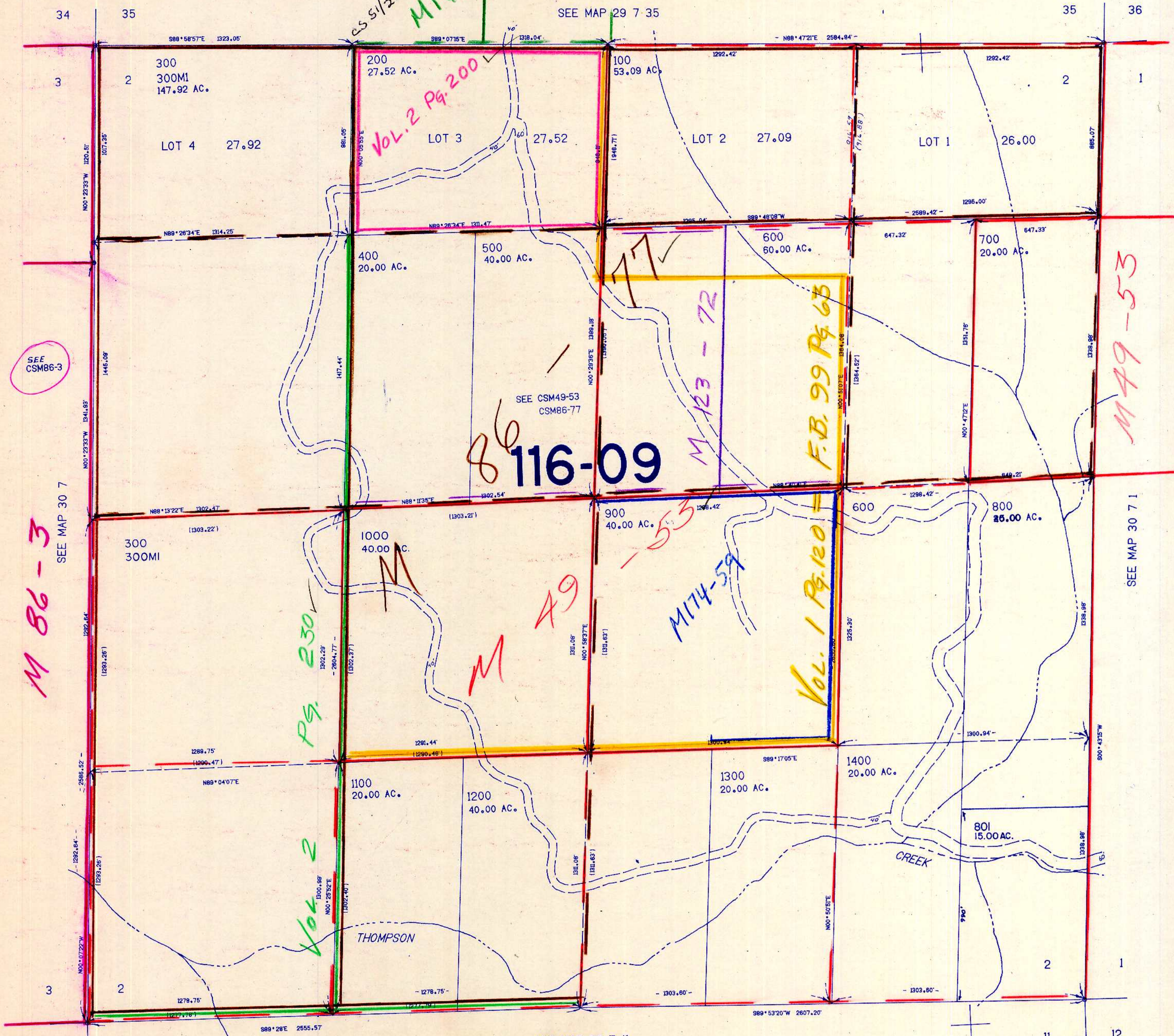


SECTION 2 T.30S. R.7W. W.M.
DOUGLAS COUNTY

THIS MAP WAS PREPARED FOR
ASSESSMENT PURPOSE ONLY.

1"=400'



SEE
CSM86-3

M 86-3
SEE MAP 30 7

86
116-09

Vol. 2
Pg. 230

M 49

M 174-59

Vol. 1 Pg. 120
F.B. 99 Pg. 63

M 49-53

SEE MAP 30 7 1

495,000

SEE MAP 30 7 11

1201,000

1/8/86
CNO