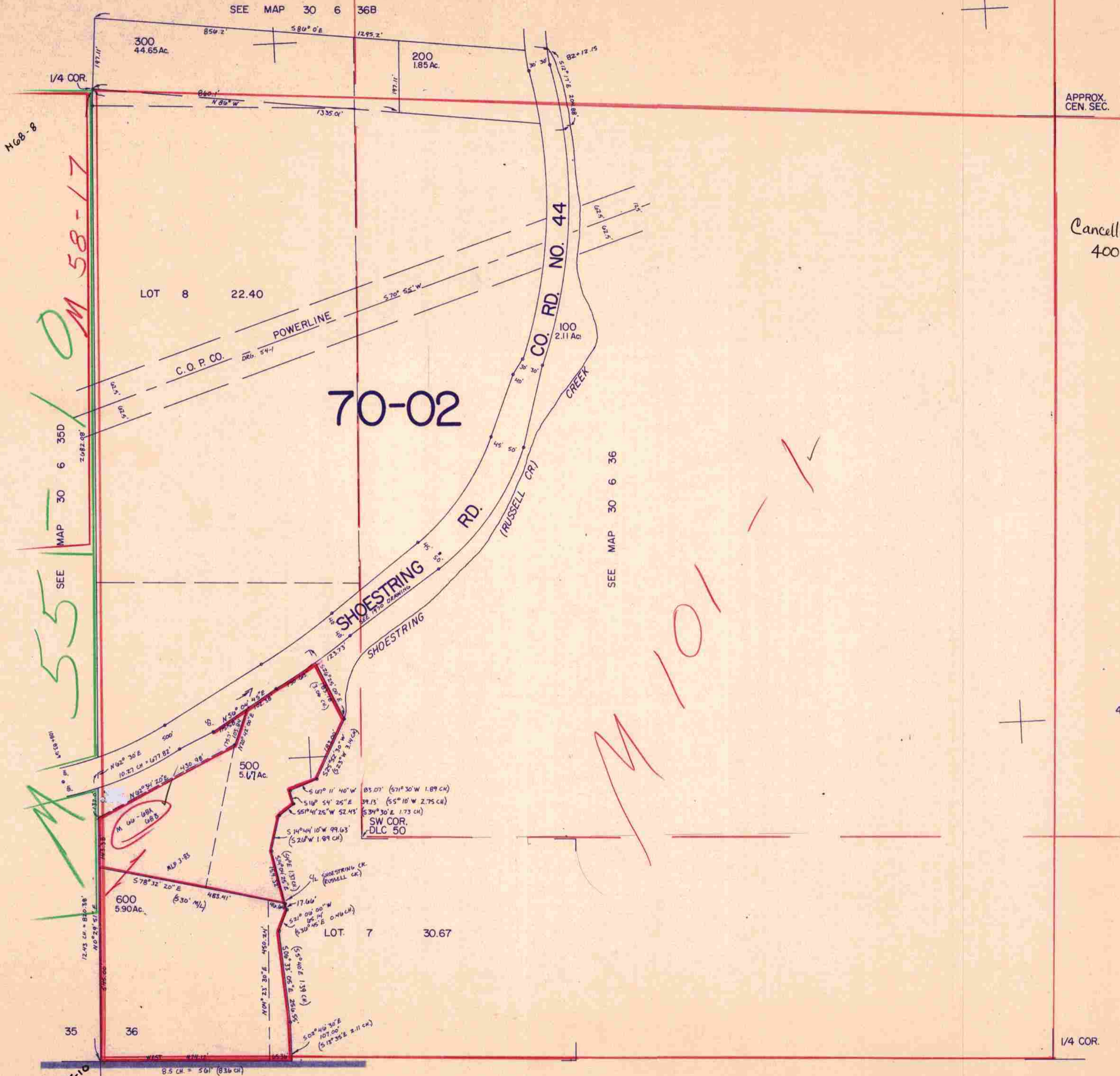


This map was prepared for assessment purpose only.

SW1/4 SEC. 36 T.30S. R. 6 W. W.M.
DOUGLAS COUNTY

30 6 36C

1" = 200'



APPROX. CEN. SEC.

Cancelled #'s
400

468,000

1/4 COR.

555

OM 58-17

M 55-10

M 101

SEE MAP 31 6 INDEX

30 6 36C
12/83 BS
1,235,000