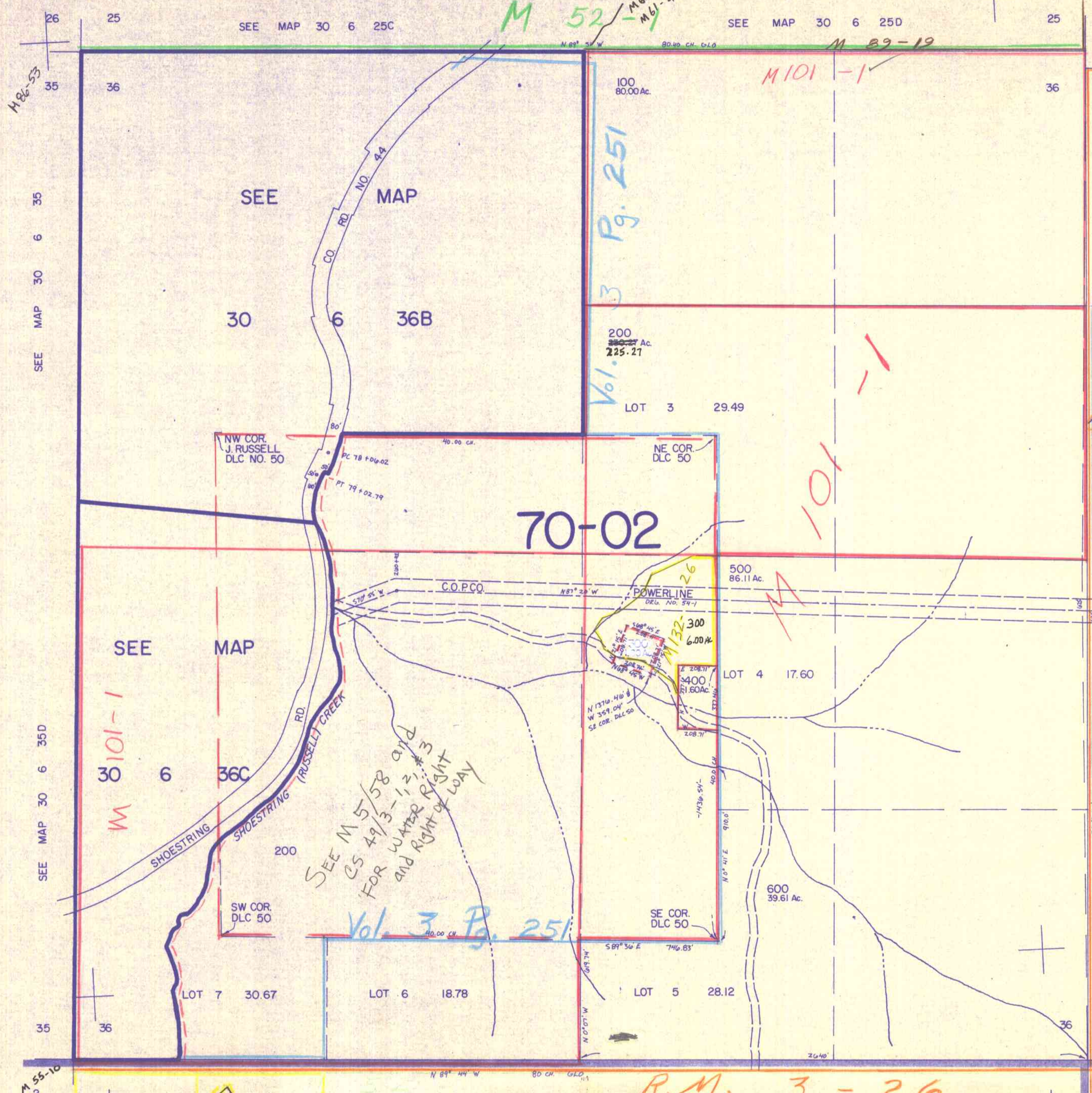


This map was prepared for assessment purpose only.

SECTION 36 T.30S. R. 6 W. W.M.  
DOUGLAS COUNTY

30 6 36  
& INDEX

1" = 400'



7 49-29  
30  
31  
3B  
5  
31B  
SEE MAP 30 5 31B  
CANCELLED NO'S  
201 301

RM 3-26  
5193.84'  
SEE MAP 30 5 31  
N 0° 47' 51.2"  
M 20-28  
M 124

M 55-10  
2  
M 146

R.M. 3-26

SEE MAP 31 6 INDEX

1,237,500

30 6 36  
& INDEX  
12/83  
BB