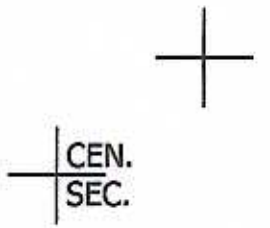


THIS MAP WAS PREPARED FOR
ASSESSMENT PURPOSE ONLY.

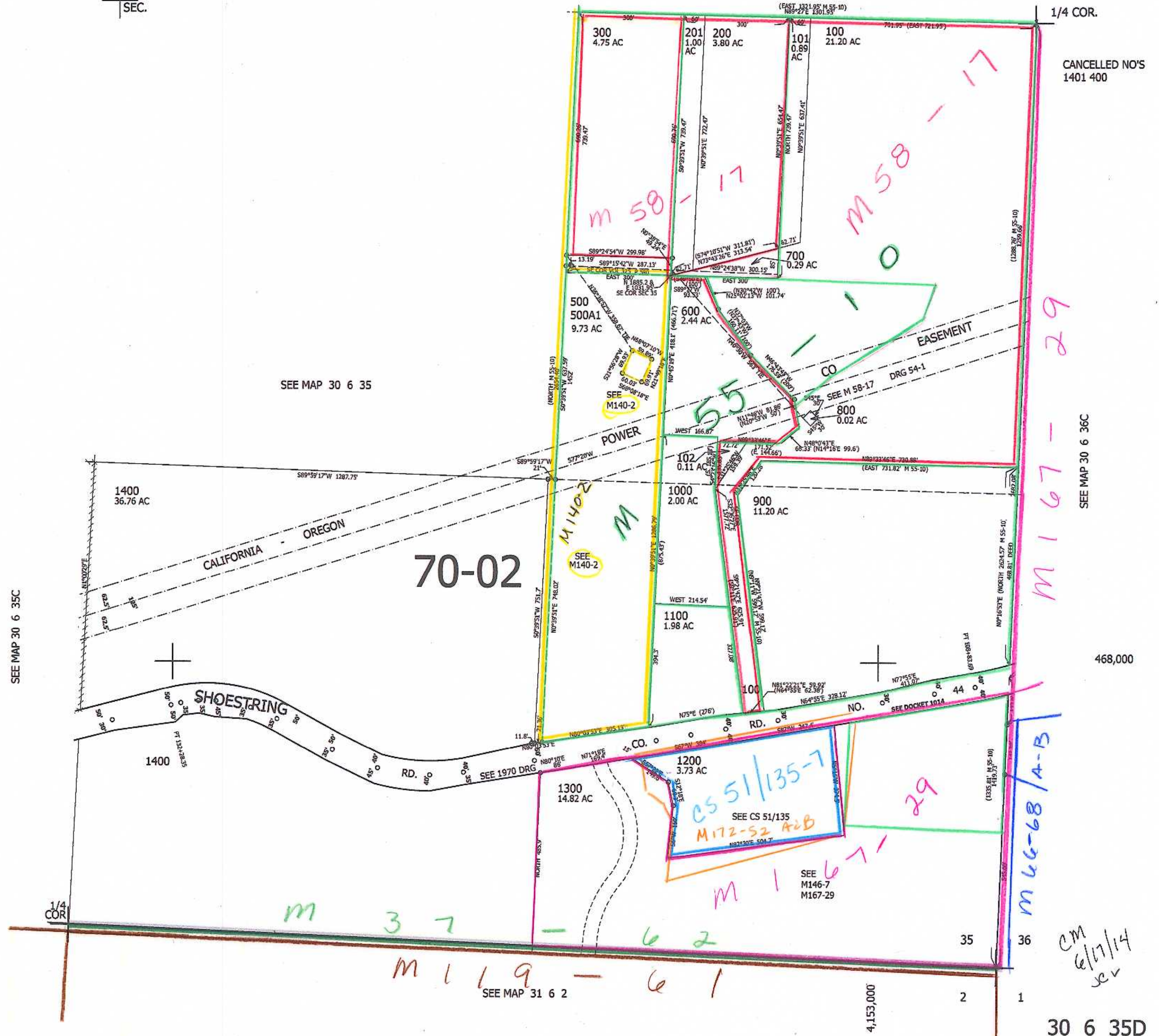
SE1/4 SEC.35 T30S. R.6W. W.M.
DOUGLAS COUNTY
1" = 200'

REVISED ON
4-9-14

30 6 35D



SEE MAP 30 6 35



CANCELLED NO'S
1401 400

SEE MAP 30 6 36C

468,000

CM
6/17/14
sev

30 6 35D