

This map was prepared for assessment purpose only.

SEE MAP 30 6 34A

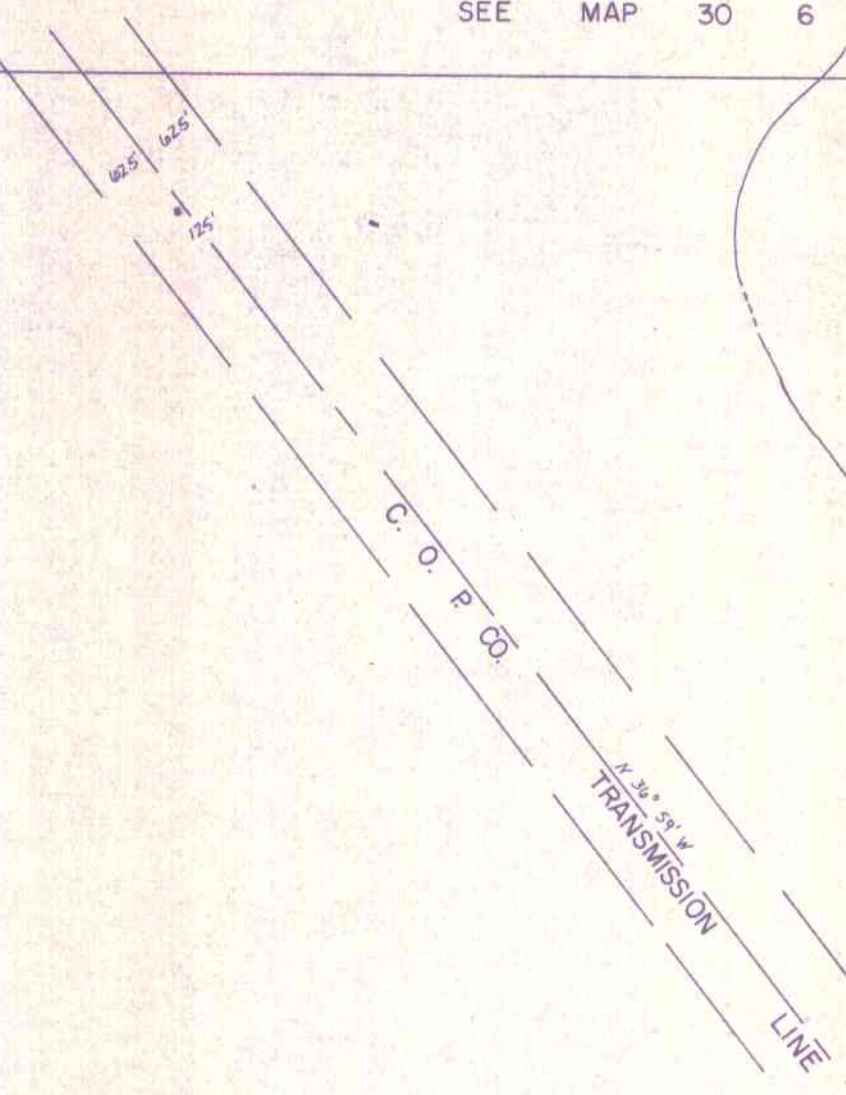
APPROX. CEN. SEC.

SEE MAP 30 6 34C

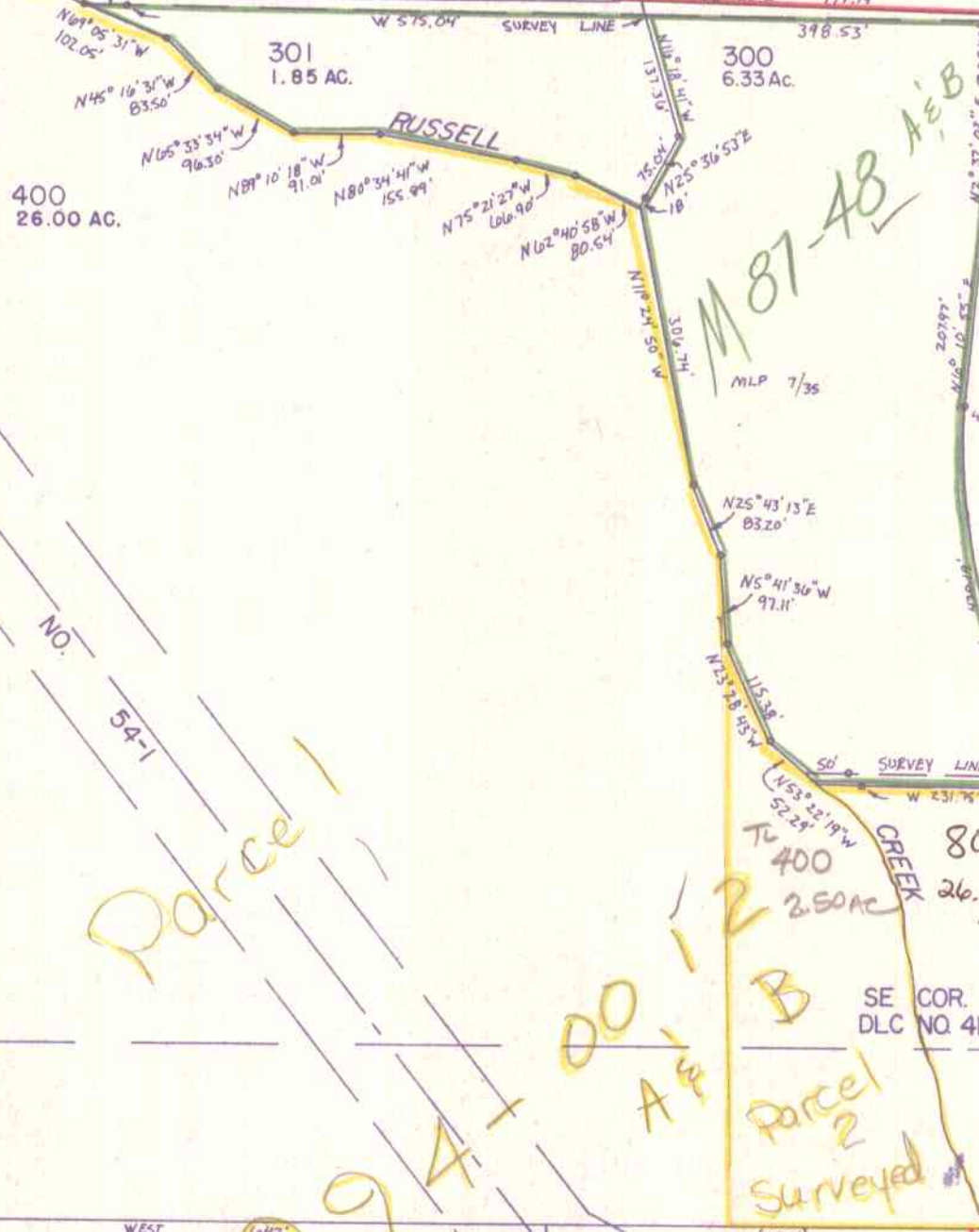
500  
90.02 Ac.

200  
7.83 Ac.

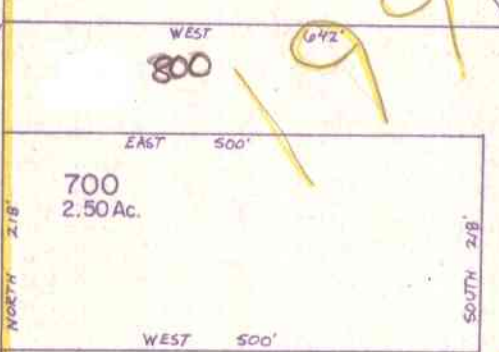
100  
5.17 AC.



70-02



LOT 7 30.96



LOT 8 30.96

APPROX. 1/4 COR.

M 91-75

SEE MAP 31 6 3

1,227,000