

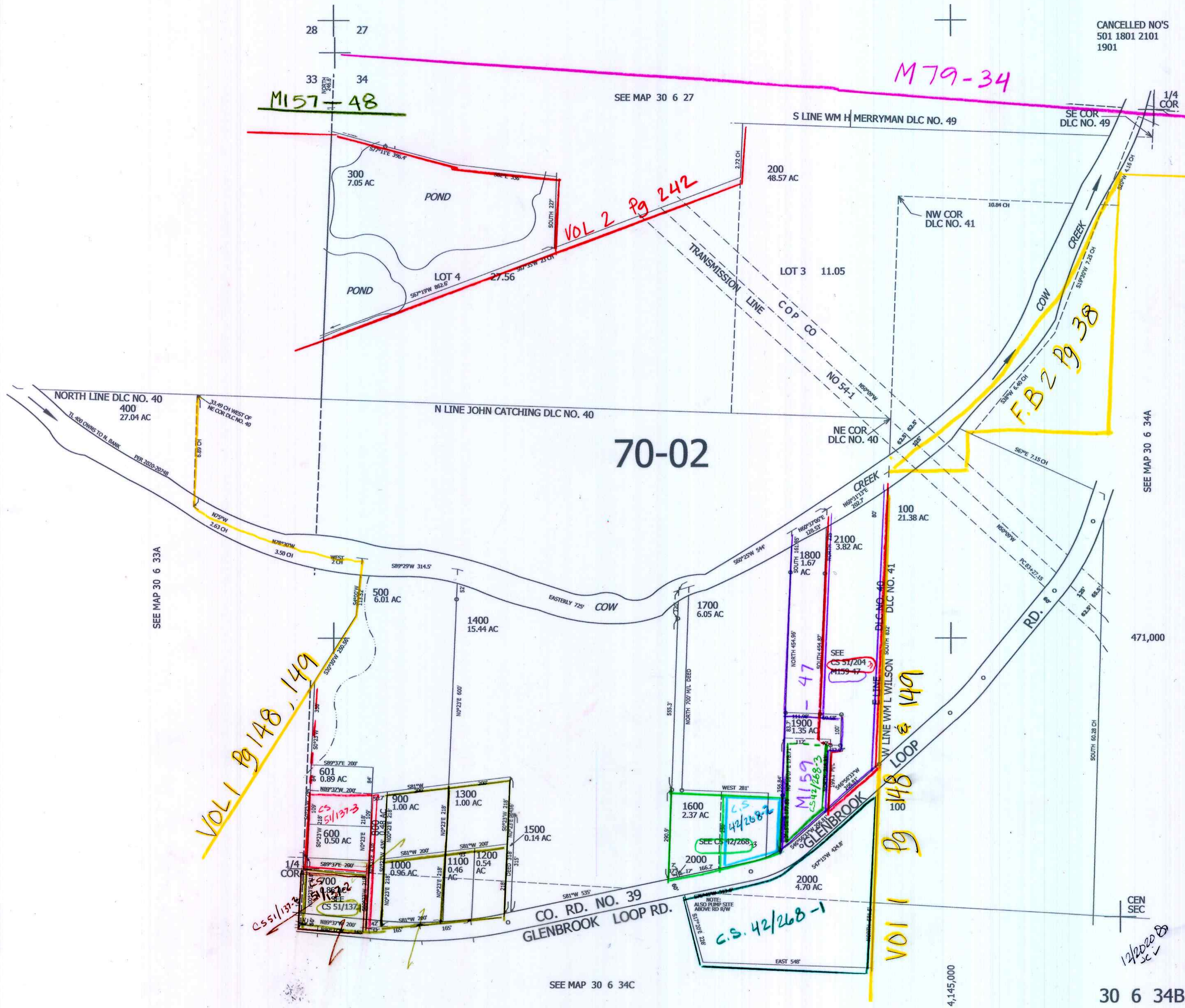
THIS MAP WAS PREPARED FOR ASSESSMENT PURPOSE ONLY.

NW1/4 SEC.34 T30S. R.6W. W.M.  
DOUGLAS COUNTY  
1" = 200'

REVISED ON  
12-14-20

30 6 34B

CANCELLED NO'S  
501 1801 2101  
1901



SEE MAP 30 6 33A

SEE MAP 30 6 34A

SEE MAP 30 6 34C

4,145,000

30 6 34B

12/20/20  
SC