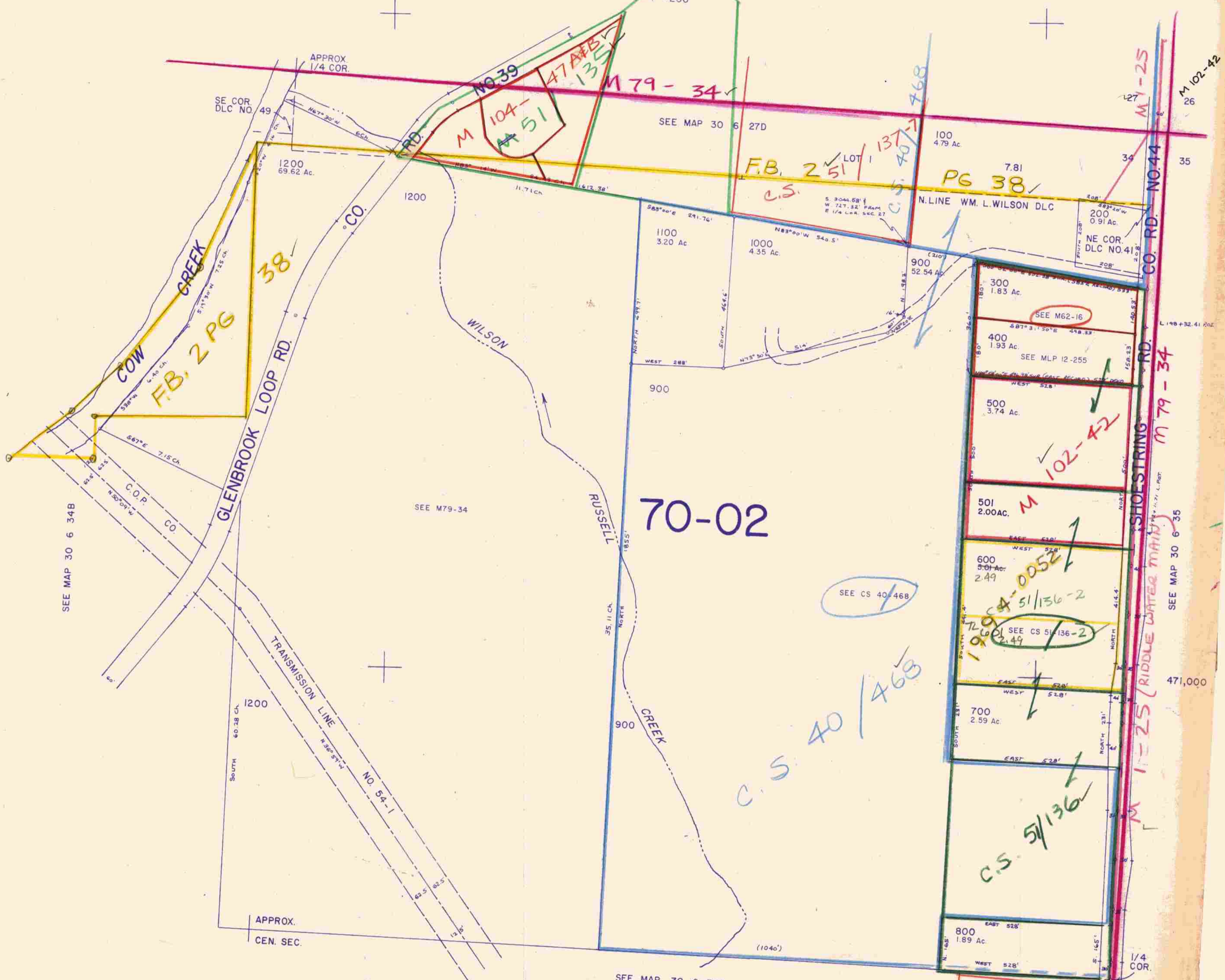


This map was prepared for assessment purposes only.

NE 1/4 SEC. 34 T.30S. R.6W. W.M. DOUGLAS COUNTY

30 6 34A

1" = 200'



SEE MAP 30 6 34B

SEE M79-34

70-02

SEE CS 40-468

SEE MAP 30 6 35

471,000

SEE MAP 30 6 34D

1,225,000

30 6 34A

423