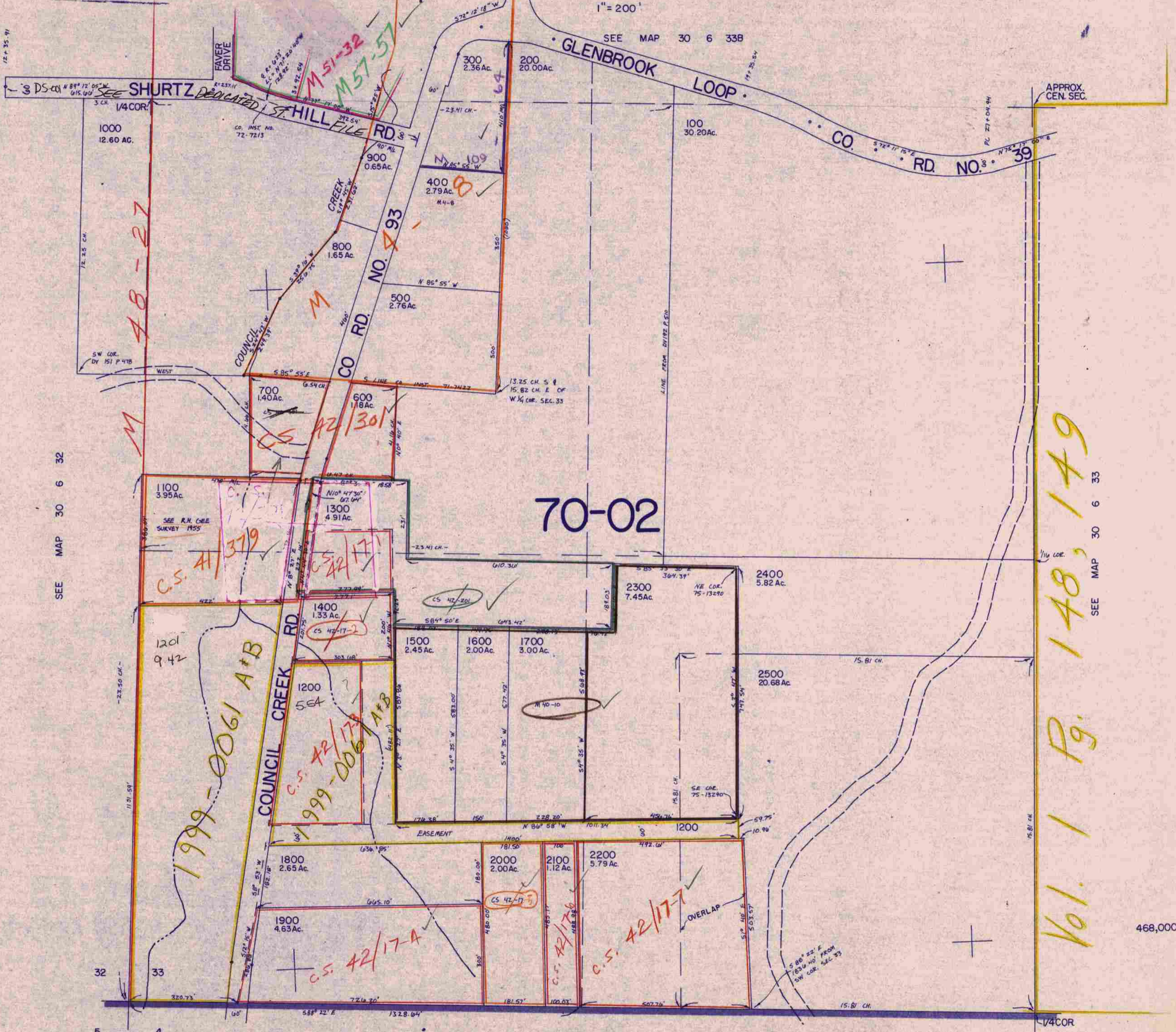


SW1/4 SEC. 33 T.30S. R. 6 W. W.M
DOUGLAS COUNTY

1" = 200'

SEE MAP 30 6 33B

This map was prepared for
assessment purposes only



70-02

Vol. 1 Pg. 148, 149

SEE MAP 30 6 32

SEE MAP 30 6 33

SEE MAP 31 6 4

468,000

1,219,000