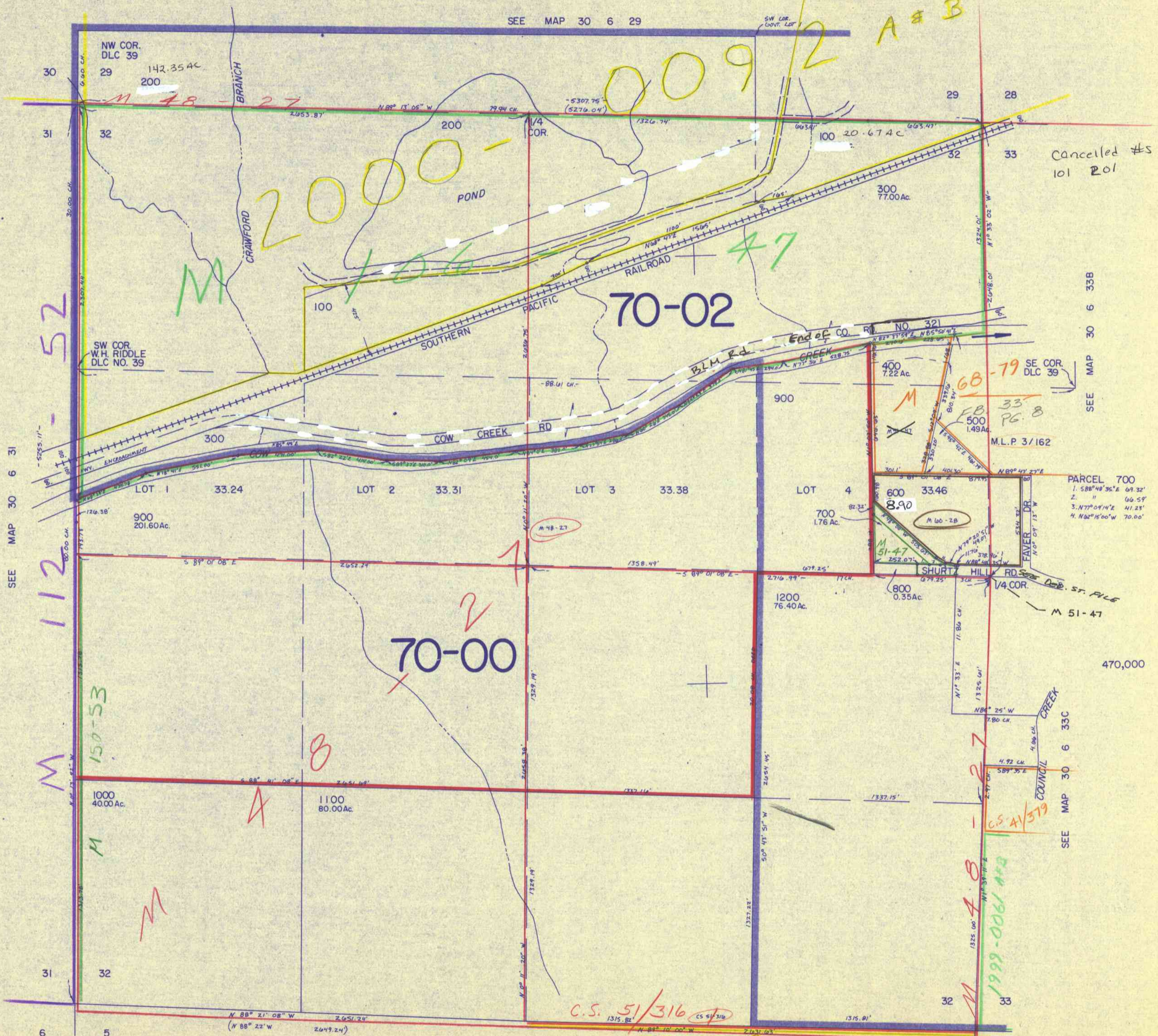


This map was prepared for assessment purpose only.

SECTION 32 T.30S. R. 6 W. W.M. DOUGLAS COUNTY

1" = 400'

SEE MAP 30 6 29



Cancelled #s 101 201

SEE MAP 30 6 33B

M.L.P. 3/162

PARCEL 700

1. 588°48'35"E 69.32'
2. " " 66.59'
3. N77°09'14"E 41.25'
4. N82°15'00"W 70.00'

470,000

SEE MAP 30 6 33C

SEE MAP 31 6 5

C.S. 51/316
 F.B. 110 Pg. 34