

This map was prepared for assessment purpose only.

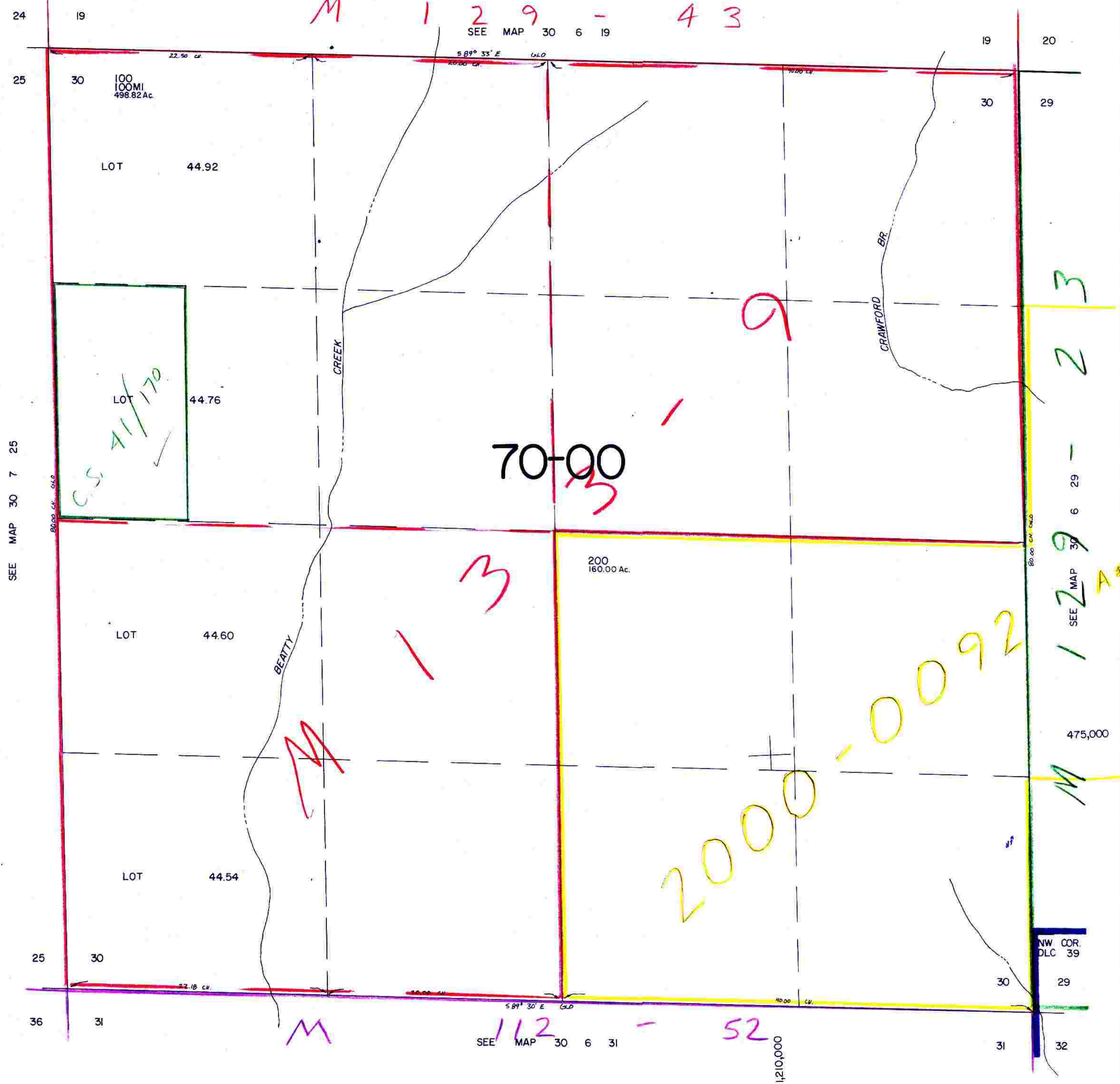
SECTION 30 T.30S. R. 6 W. W.M.
DOUGLAS COUNTY

30 6 30

1" = 400'

M 1 2 9 - 4 3

SEE MAP 30 6 19



NW COR. DLC 39

SEE MAP 30 6 31

12/03 BS 30 6 30