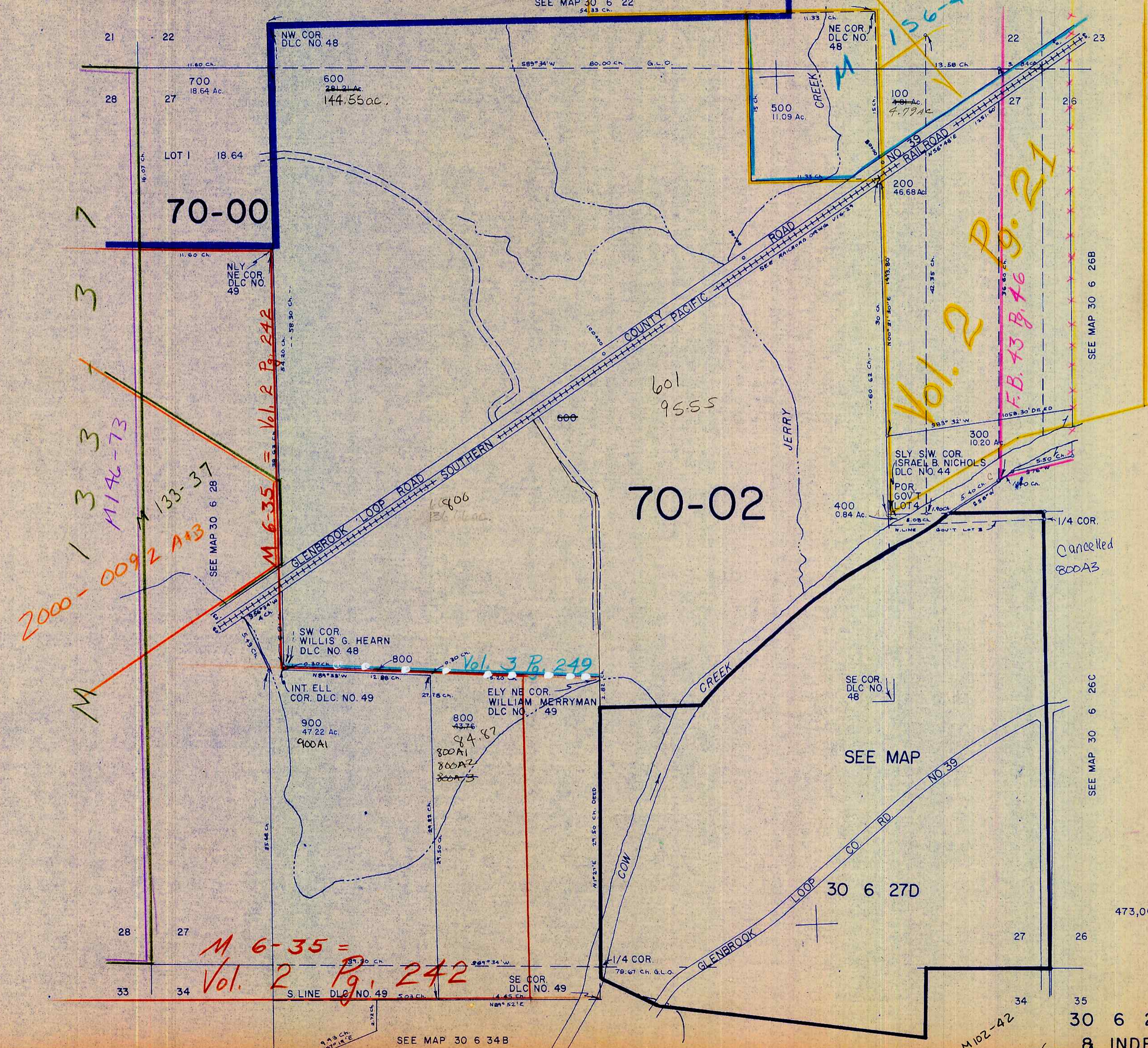


SECTION 27 T.30S. R.6W. W.M.  
DOUGLAS COUNTY

30 6 27  
& INDEX

This map was prepared for  
assessment purposes only.

1" = 400'  
SEE MAP 30 6 22



70-00

70-02

SEE MAP

30 6 27D

Cancelled  
800A3

SEE MAP 30 6 26C

473,000

30 6 27  
& INDEX

2000-0092 A+B  
M 6-35 = Vol. 2 Pg. 242  
M 133-37  
M 146-73

Vol. 2 Pg. 21  
F.B. 73 B. 46

M 6-35 =  
Vol. 2 Pg. 242

M 102-42

12/93  
BS

1,221,000

SEE MAP 30 6 34B

SEE MAP 30 6 34A