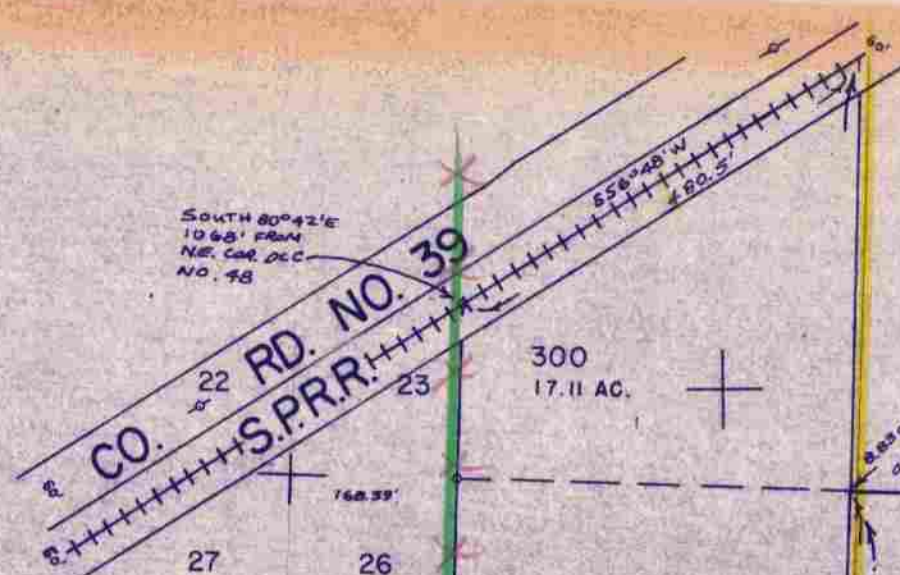


NW 1/4 SEC. 26 T.30S. R.6W. W.M.  
DOUGLAS COUNTY

30 6 26B

1" = 200'

SEE MAP 30 6 23C



300  
17.11 AC.

200  
37.83 AC.

100  
54.69 AC.

100  
POND

APPROX. 1/4 COR.

This map was prepared for assessment purposes only.

Vol. 2 Pg. 21

Vol. 2

70-02

Vol. 2 Pg. 21

SEE MAP 30 6 27  
Vol. 3 Pg. 37, 38

SEE MAP 30 6 26A



500  
1.98 AC.

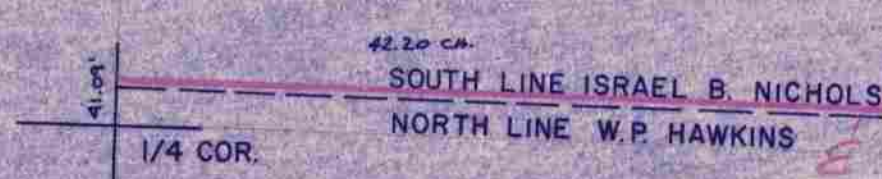
COW CREEK

100  
16.80 AC.

F.B. 13 B-46

SEE MAP 30 6 26

M 119-68



Vol. 2 Pg. 273  
E.F.B. 110 Pg. 18

SE COR. DLC NO. 44

SEE MAP 30 6 26C

SEE M12-77

APPROX. CEN. SEC.

1,228,000



30 6 26B

12/83 bl