

This map was prepared for assessment purpose only.

NE 1/4 SEC. 26 T.30S. R.6W. W.M.
DOUGLAS COUNTY

30 6 26A

1" = 200'

INT ELL COR.
DLC NO. 44
NW COR.
DLC NO. 43

ENE COR. I. NICHOLS
DLC NO. 44
SW COR. I. FLINT
DLC NO. 45

APPROX.
1/4 COR.

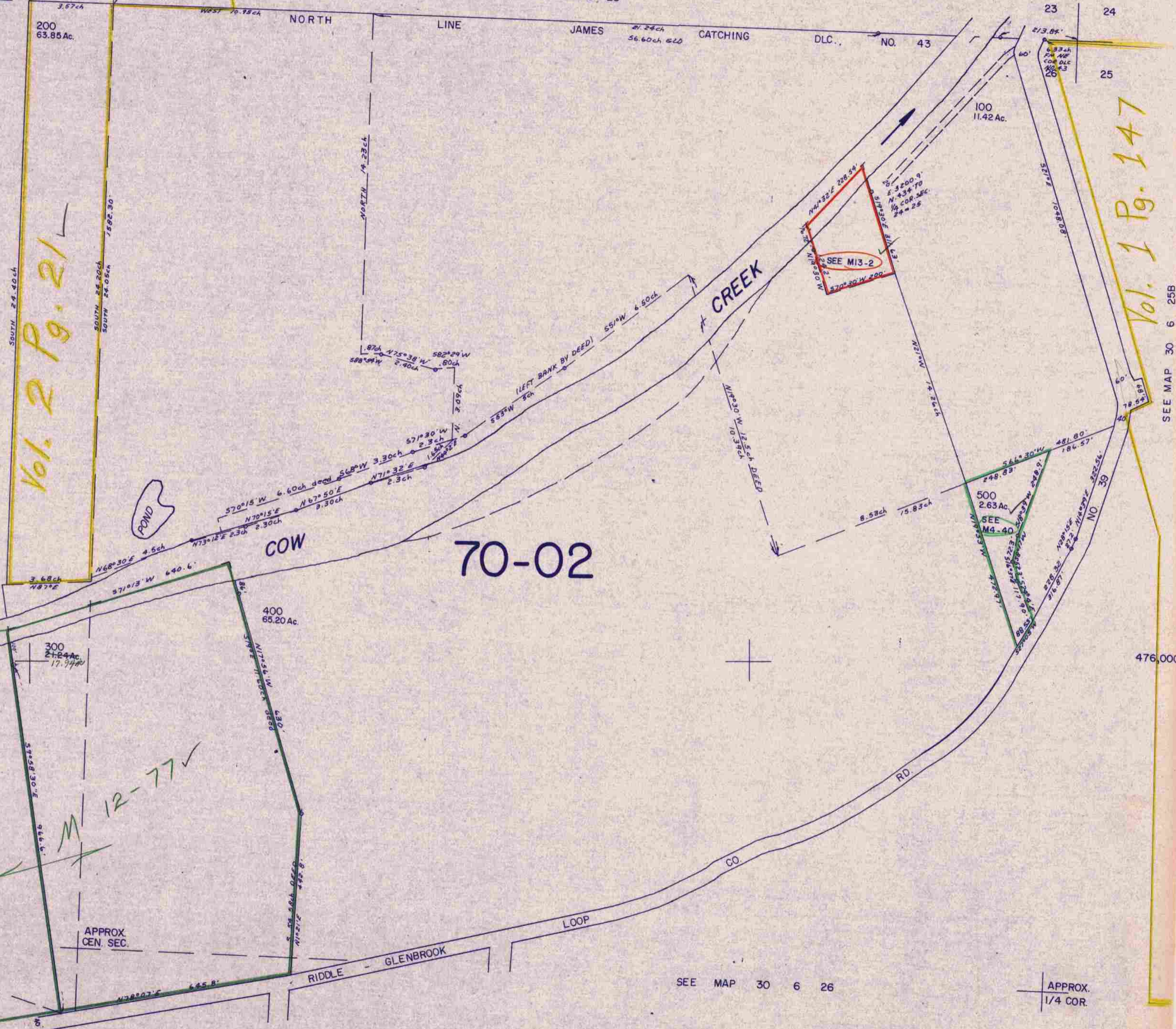
SEE MAP 30 6 23

Vol. 2 Pg. 21

Vol. 1 Pg. 147

SEE MAP 30 6 26B

SEE MAP 30 6 25B



70-02

M 12-77

SEE MAP 30 6 26

APPROX.
1/4 COR.

SEE MAP 30 6 26D

1,232,000

30 6 26A
12/83
BL

476,000