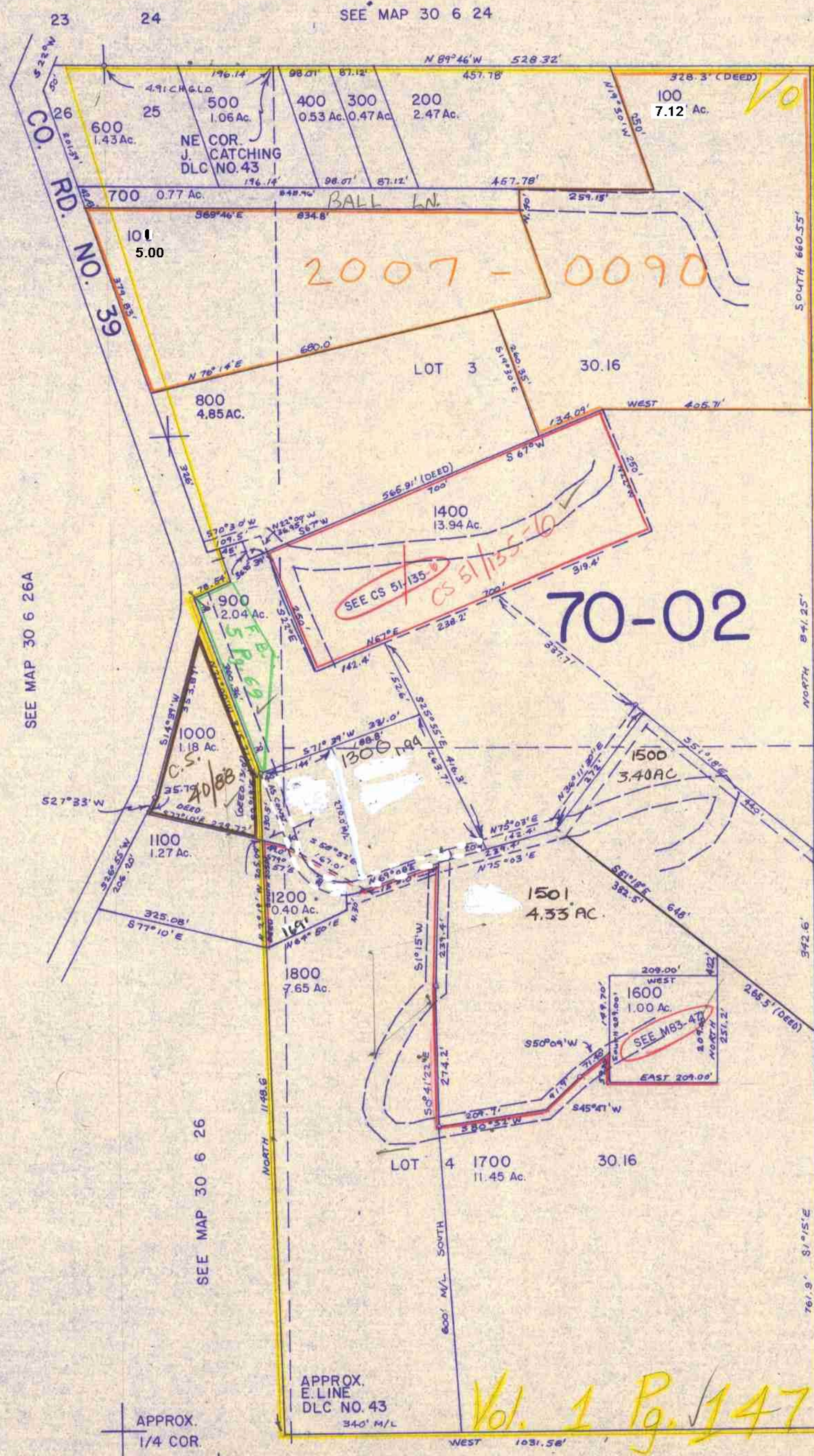


NW1/4 SEC. 25 T.30S. R.6W. W.M.

DOUGLAS COUNTY

1" = 200'

This map was prepared for assessment purpose only.



1/4 COR.

477,000

SEE MAP 30 6 26A

SEE MAP 30 6 25

SEE MAP 30 6 26

SEE MAP 30 6 25

APPROX. 1/4 COR.

CEN. SEC.

APPROX. E. LINE DLC NO. 43

1,233,000