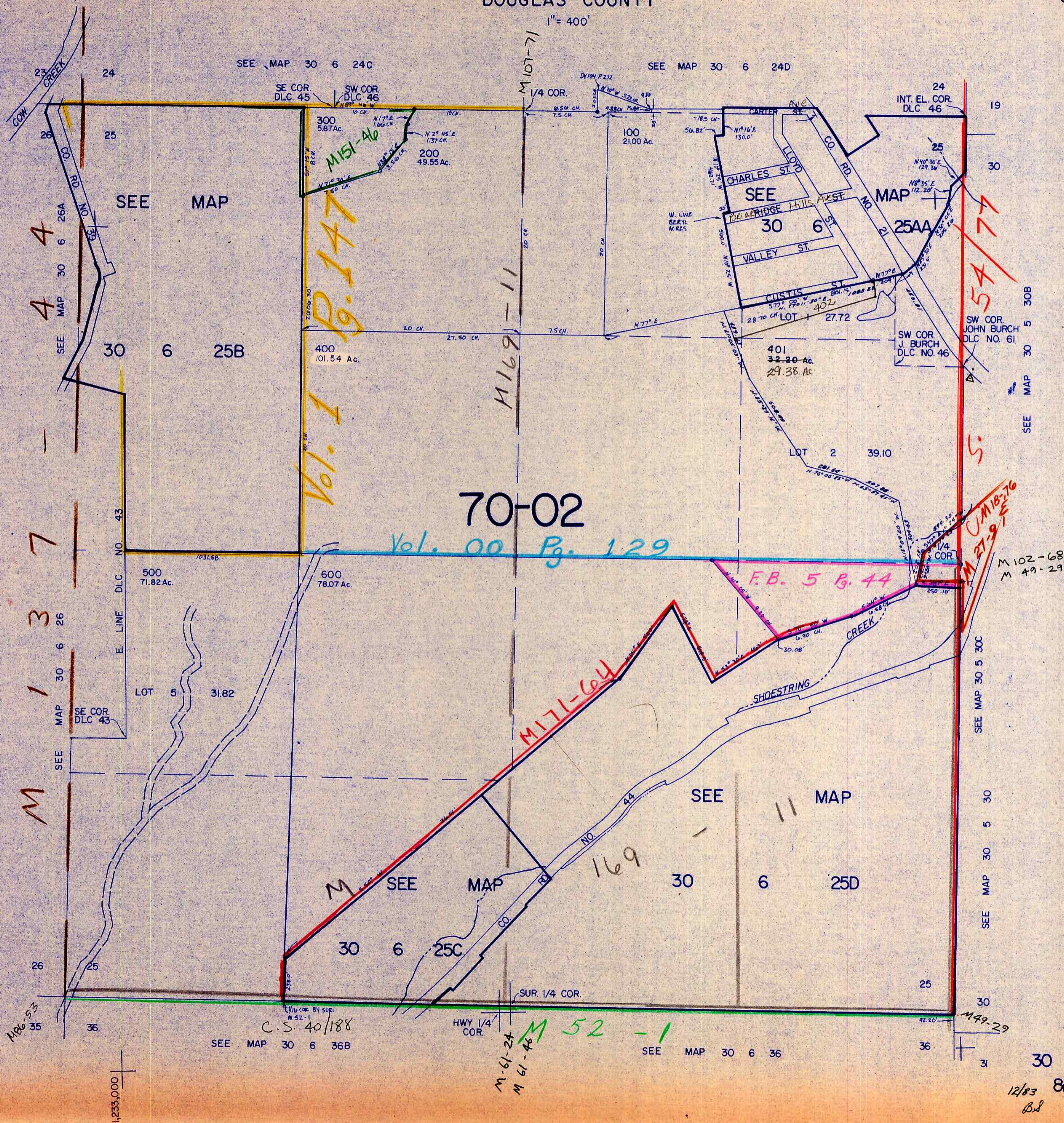


This map was prepared for assessment purpose only.

SECTION 25 T.30S. R. 6 W. W.M.
DOUGLAS COUNTY

1" = 400'



M 1 3 7
M 4 4 4
M 101-71
M 169-11
M 111-64
M 102-68
M 49-29
M 18-76
M 102-68
M 49-29

Vol. 1 Pg. 147

70-02

Vol. 00 Pg. 129

F.B. 5 Pg. 44

SEE MAP 30 6 24C
SEE MAP 30 6 24D
SEE MAP 30 6 25A
SEE MAP 30 6 25B
SEE MAP 30 6 25C
SEE MAP 30 6 25D
SEE MAP 30 6 36B
SEE MAP 30 6 36

1,233,000

472,000