

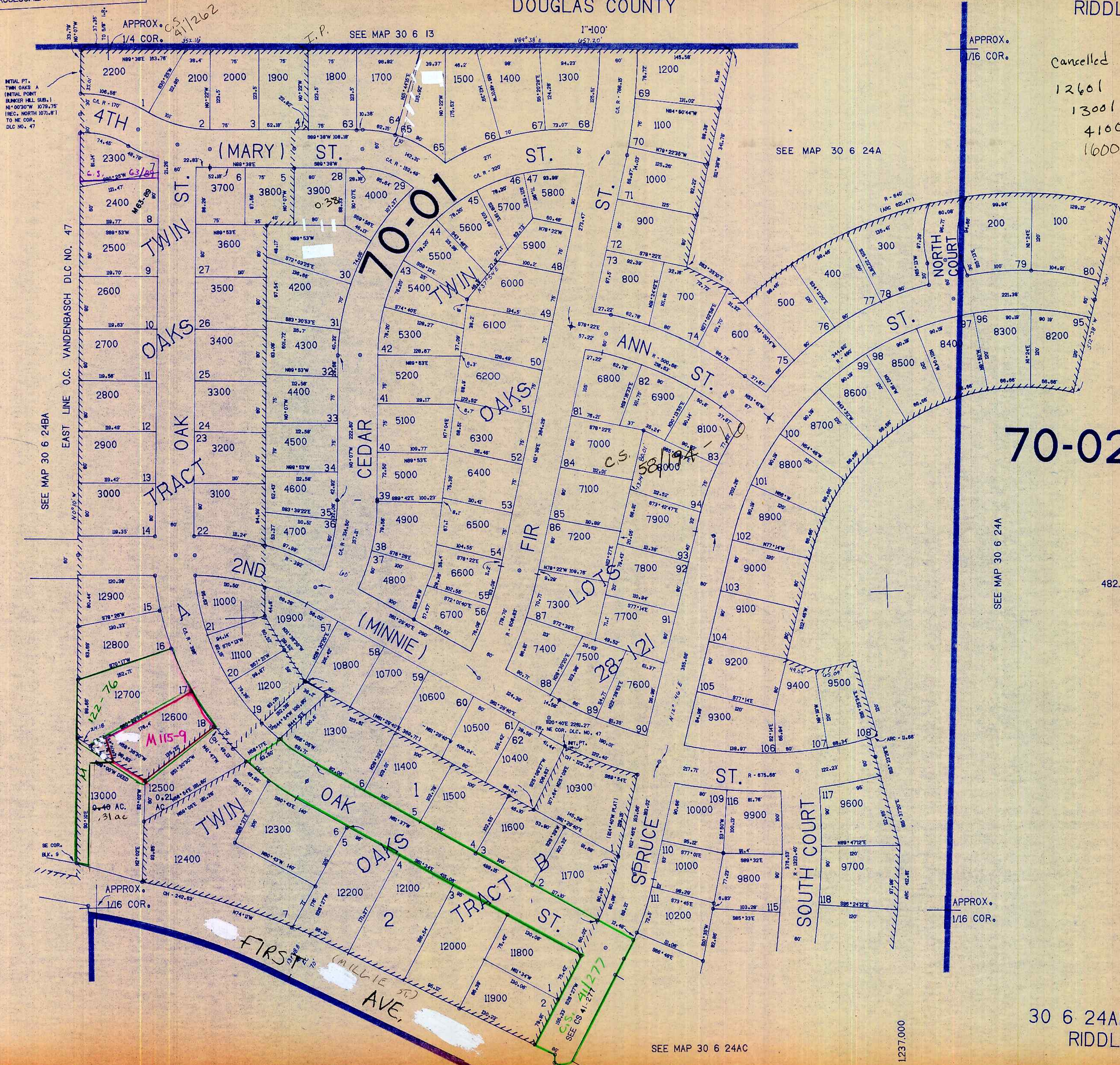
THIS MAP WAS PREPARED FOR ASSESSMENT PURPOSE ONLY.

NW1/4, NE1/4 SEC. 24 T. 30S. R. 6W. W.M. DOUGLAS COUNTY

REVISED ON 5-11-92

30 6 24AB RIDDLE

Cancelled  
12601  
13001  
4100  
16000



SEE MAP 30 6 24BA

SEE MAP 30 6 24A

SEE MAP 30 6 24A

SEE MAP 30 6 24AC

482.000

1237.000

30 6 24AB RIDDLE

5192  
115

CHECKED  
TRACED  
LAYOUT  
CONTROL