

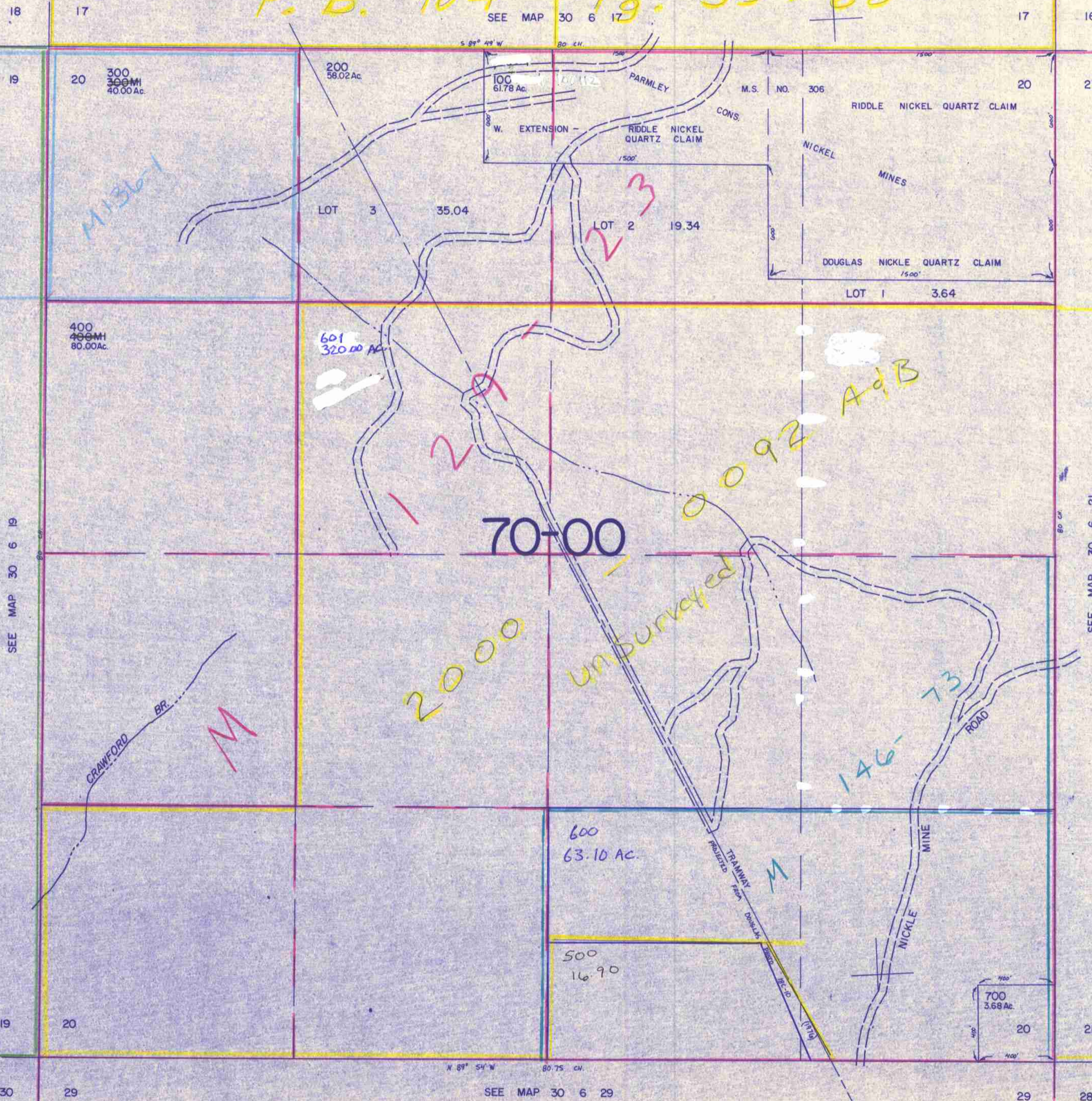
SECTION 20 T.30S. R. 6 W. W.M.  
DOUGLAS COUNTY

1" = 400'

This map was prepared for  
assessment purposes only.

F. B. 104 | Pg. 59 -> 68

SEE MAP 30 6 17



Cancelled #'s  
300 mi 400 mi 600 mi  
501 502 700  
10001 10002

M 1 2 9 - 4 3

2000

unsurveyed

0092 A+B

146-73

SEE MAP 30 6 21

SEE MAP 30 6 29