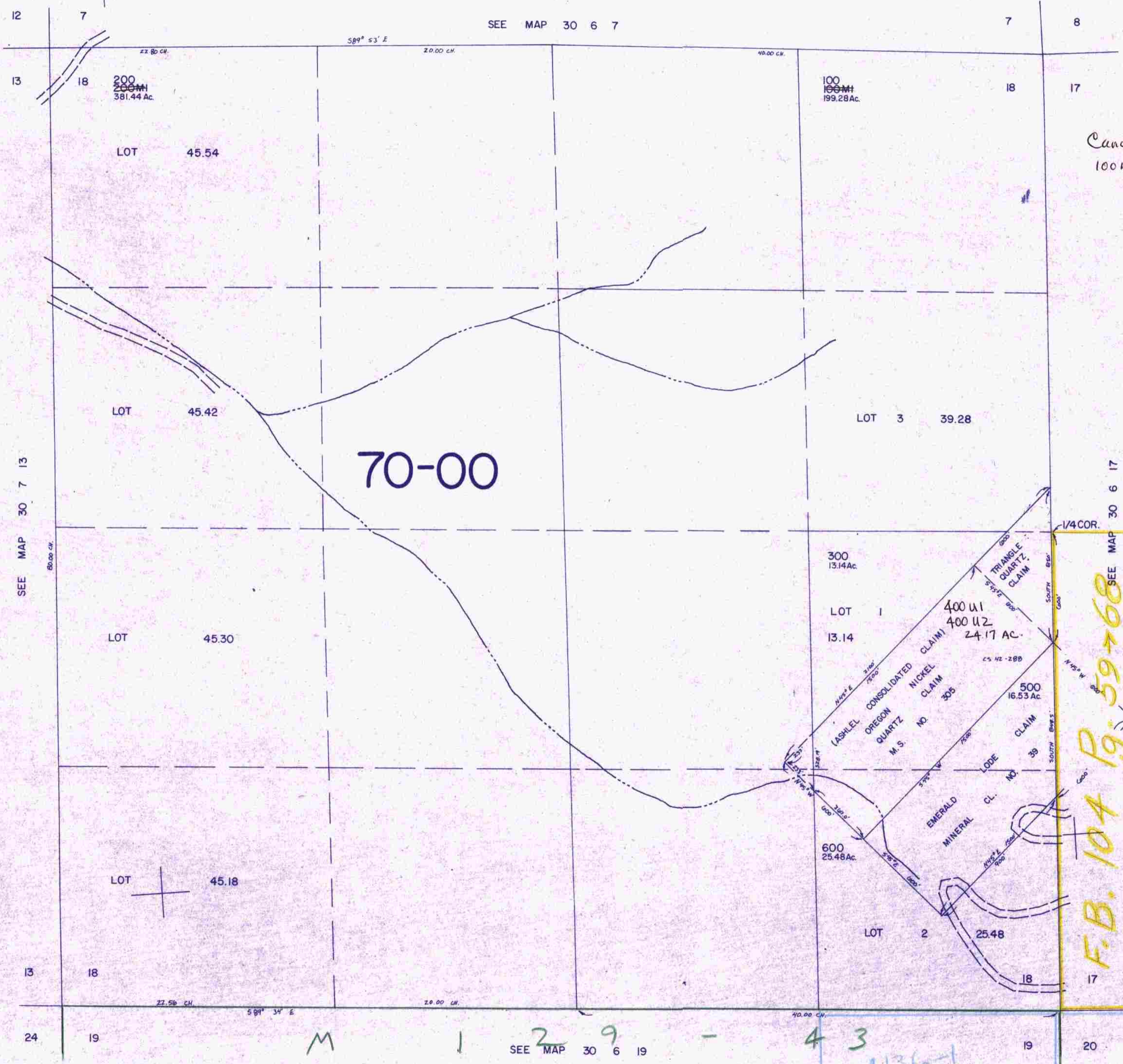


This map was prepared for assessment purpose only.

SECTION 18 T.30S. R. 6 W. W.M.
DOUGLAS COUNTY
1" = 400'

30 6 18



Cancelled #'s
100 mi 200 mi

F.B. 104 19-59-68

M 1 2 9 - 4 3

SEE MAP 30 6 19

M136-1

1/83
28
1212,000
30 6 18