

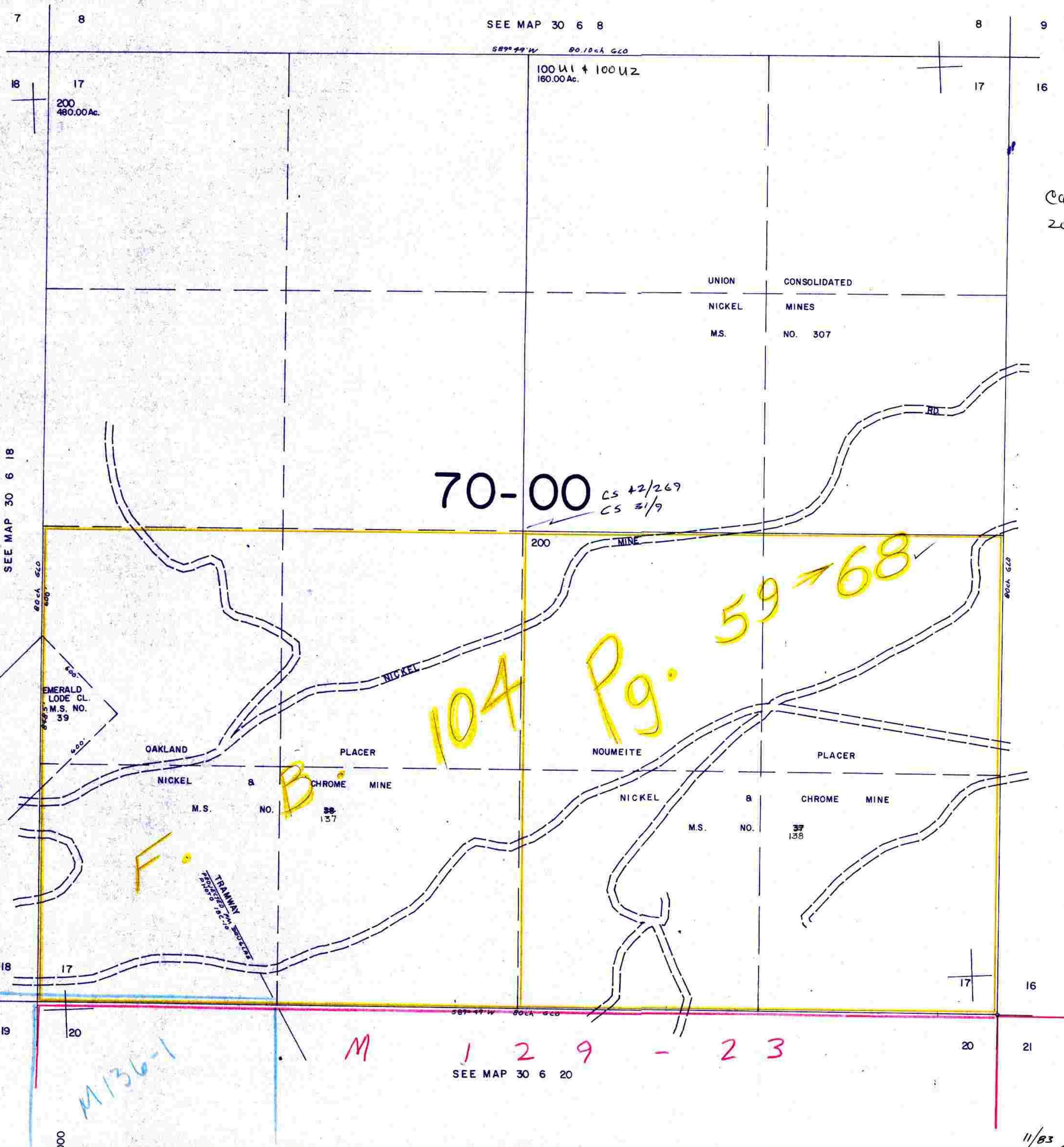
This map was prepared for assessment purpose only.

SECTION 17 T.30S. R.6W. W.M.
DOUGLAS COUNTY

30 6 17

1" = 400'

SEE MAP 30 6 8



Cancelled H's
200 A1

70-00 CS 42/269
CS 31/9

104 Pg. 59-68

M 1 2 9 - 2 3

SEE MAP 30 6 20

SEE MAP 30 6 18

SEE MAP 30 6 16

484,000

30 6 17

11/83 BS

1,212,000