

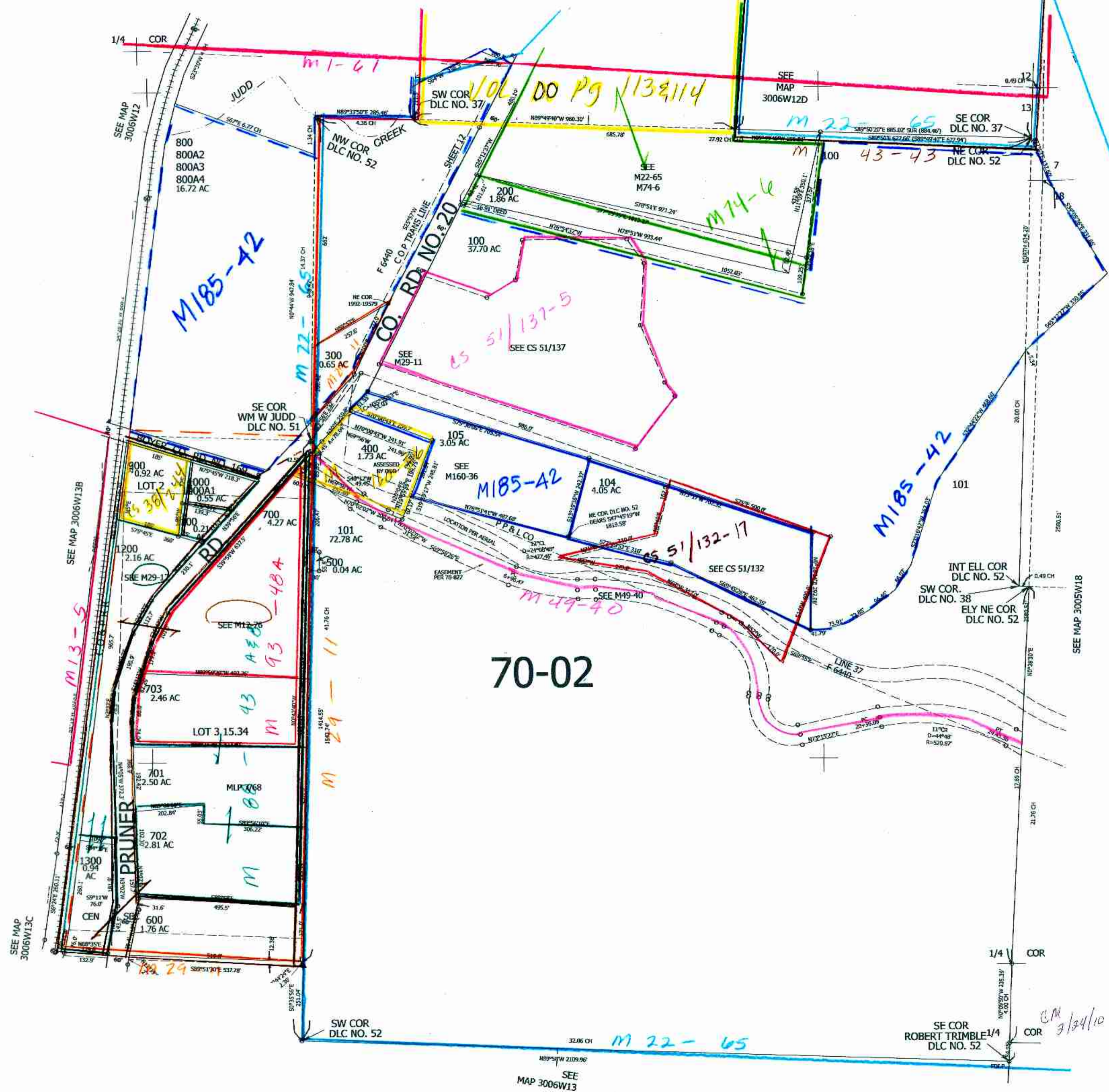
THIS MAP WAS PREPARED FOR ASSESSMENT PURPOSE ONLY.

Upper Left:
123°21'32"W 42°58'15"N
4156311E 488373N ft

NE1/4 SEC.15 T.30S. R.06W. W.M.
DOUGLAS COUNTY
1" = 200'

300613A

CANCELLED NO
800A1 102 1
106 100



70-02

SEE MAP 3006W13C

SEE MAP 3006W13B

SEE MAP 3006W12

SEE MAP 3006W12D

SEE MAP 3005W18

SEE MAP 3006W13

SE COR ROBERT TRIMBLE 1/4 COR DLC NO. 52

CM 3/24/10 sev

300613A

Lower Right:
123°20'38"W 42°57'42"N
4160236E 484895N ft