

THIS MAP WAS PREPARED FOR ASSESSMENT PURPOSE ONLY.

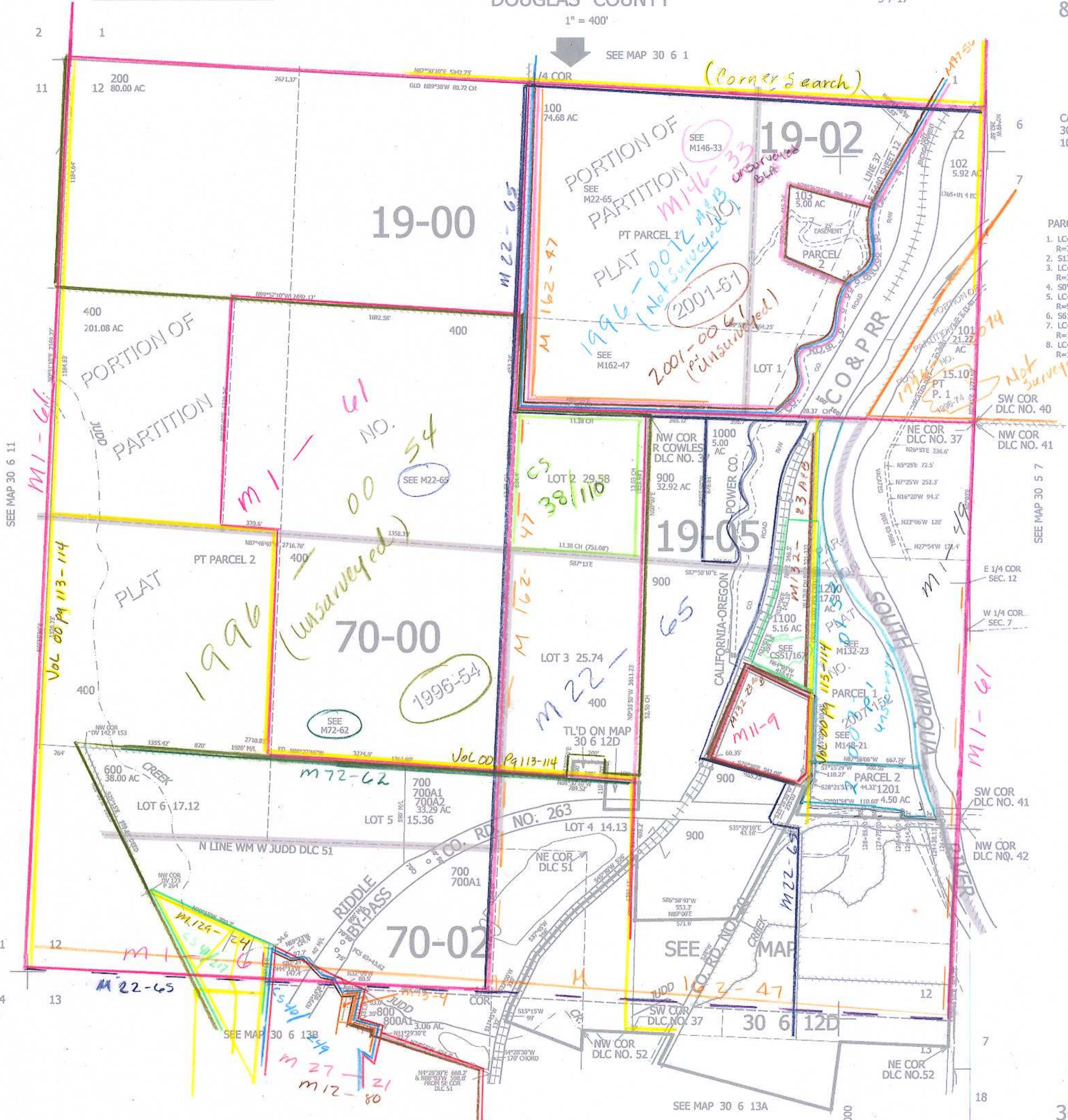
SEC.12 T30S. R.6W. W.M. DOUGLAS COUNTY

REVISED ON 3-7-17

30 6 12 & INDEX

1" = 400'

SEE MAP 30 6 1



CANCELLED 300 500 104 105

PARCEL 103

1. LC=50°21'52"E 167.05'
2. R=372.59' A=168.49'
3. LC=513°19'09"E 18.04'
4. R=56°32'05"E 83.56'
5. R=353.67' A=83.76'
6. 50°15'W 31.4'
7. LC=S30°48'30"W 97.36'
8. R=95.75' A=102.13'
9. LC=S51°13'10"W 40.7'
10. R=115.49' A=40.91'
11. LC=S36°15'14"W 19.4'
12. R=115.49' A=19.42'

489,000

30 6 12 & INDEX