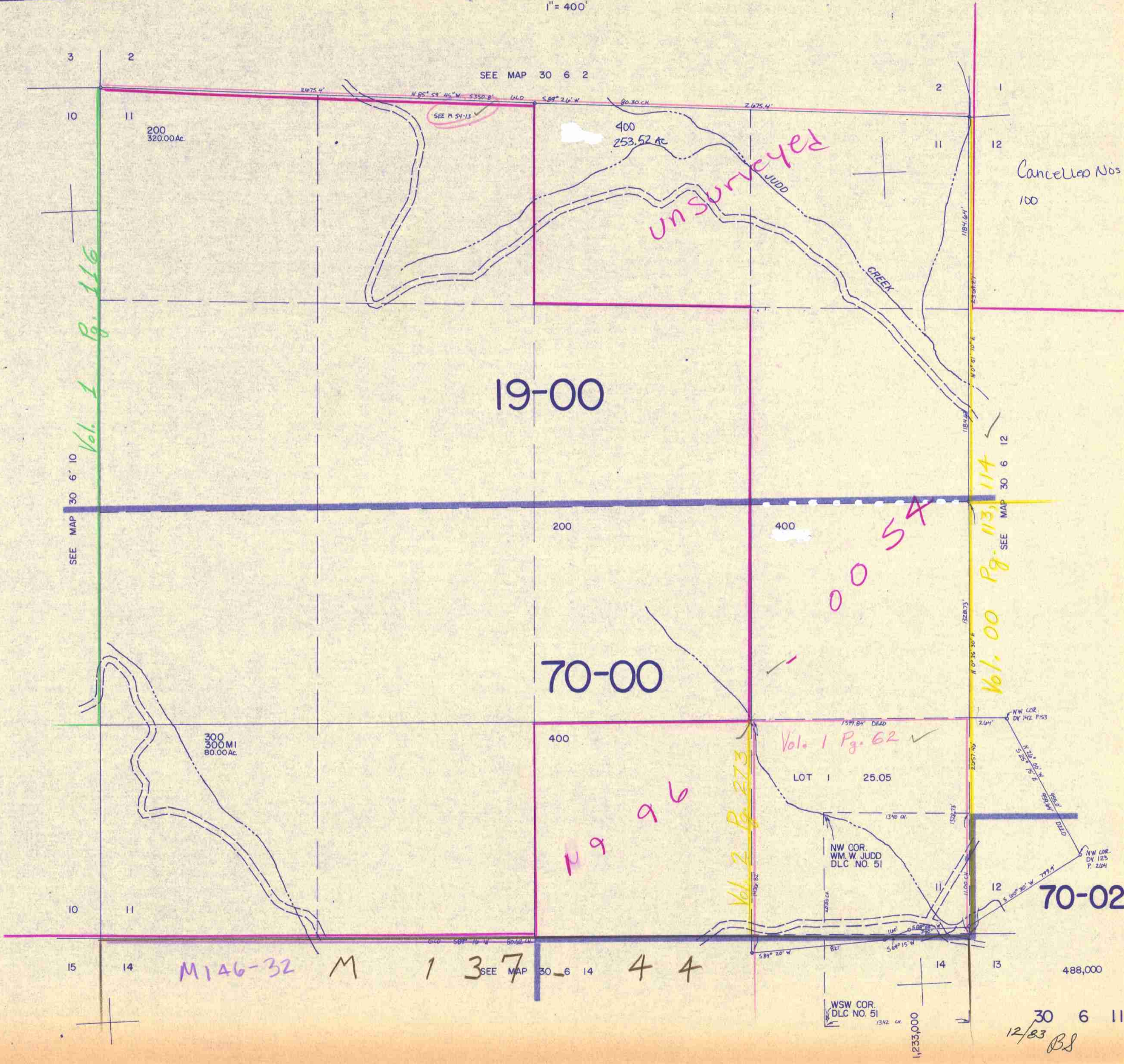


This map was prepared for assessment purpose only.

SECTION 11 T.30S. R. 6 W. W.M.  
DOUGLAS COUNTY

1" = 400'



SEE MAP 30 6 10  
Vol. 1 Pg. 116

SEE MAP 30 6 2

Cancelled Nos  
100

SEE MAP 30 6 12  
Vol. 00 Pg. 113, 114

Vol. 1 Pg. 62 ✓

Vol. 2 Pg. 273

M 146-32 M 137 44  
SEE MAP 30-6 14

WSW COR.  
DLC NO. 51  
1342 CH.

NW COR.  
DY 123  
P. 2104

488,000

30 6 11  
12/83 BS