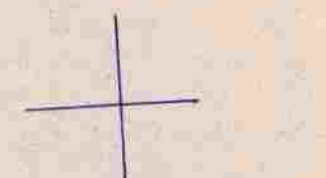


This map was prepared for assessment purpose only.

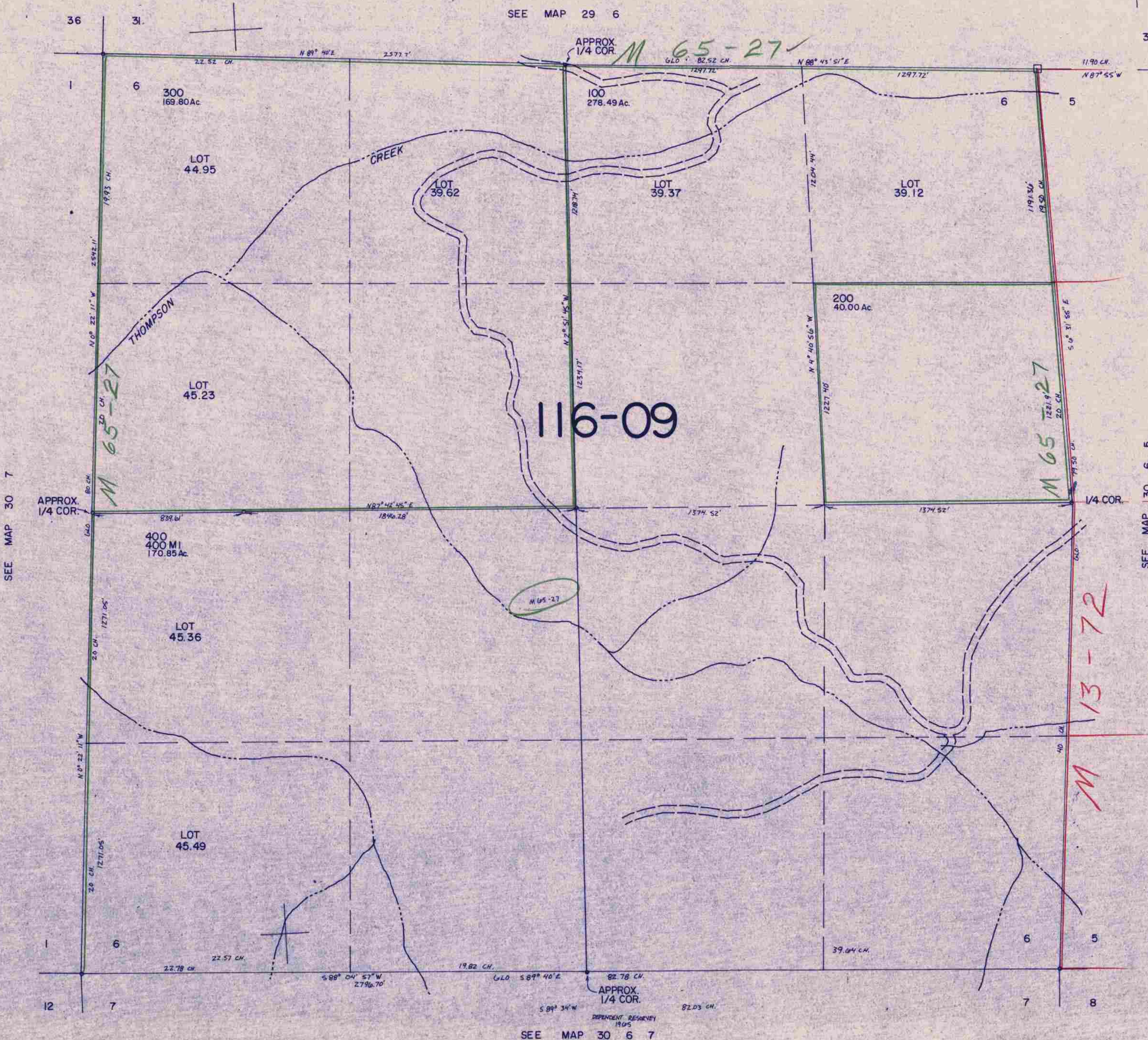
SECTION 6 T.30S. R. 6 W. W.M.
DOUGLAS COUNTY

30 6 6

1" = 400'



SEE MAP 29 6



SEE MAP 30 7

SEE MAP 30 5

SEE MAP 30 6 7

495,000

1,213,000

30 6 6

12/83 *BS*