

This map was prepared for assessment purpose only

SECTION 5 T.30S. R. 6 W. W.M.
DOUGLAS COUNTY

30 6 5

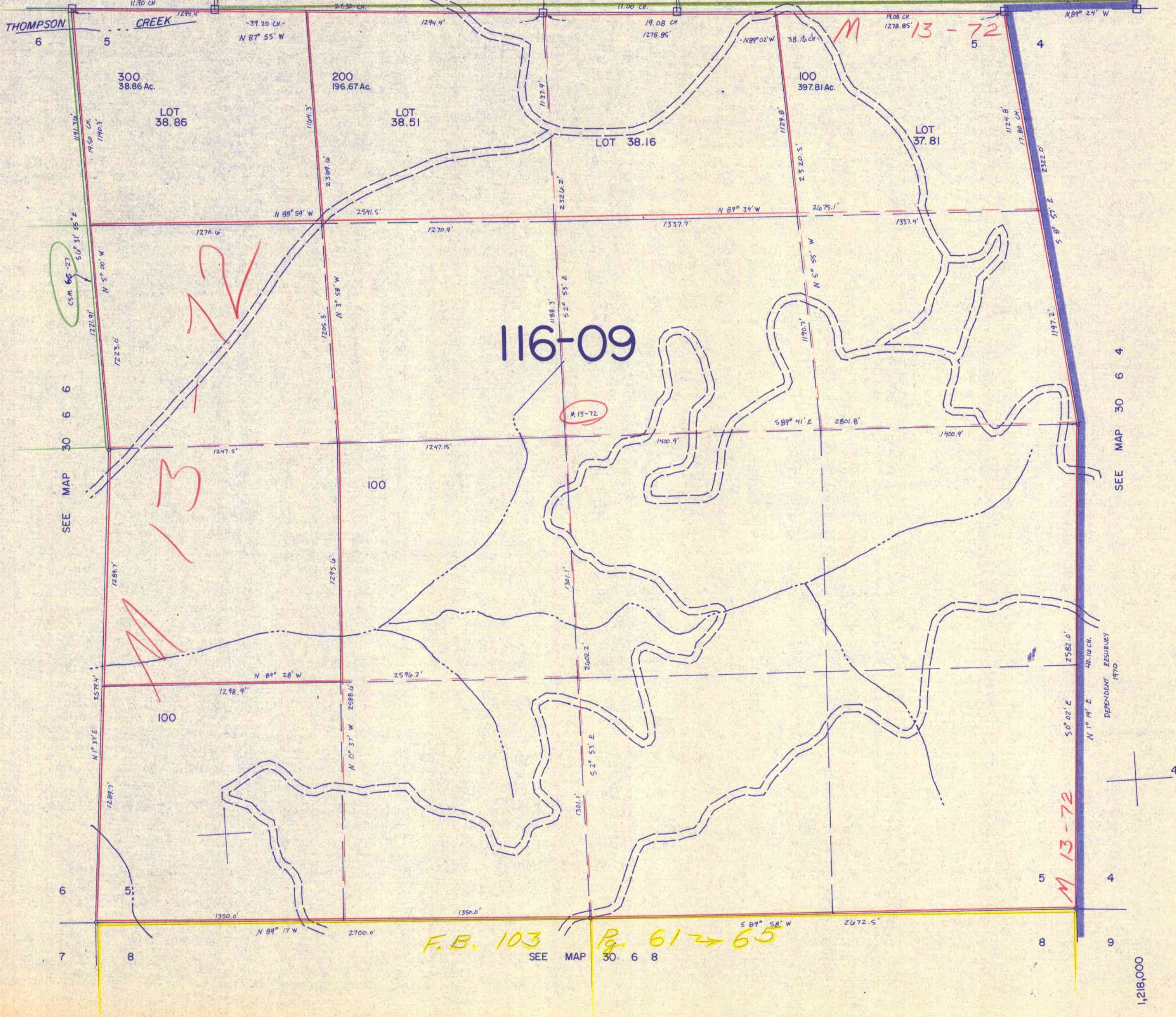
1" = 400'

M 162-22

SEE MAP 29 6

DEPENDENT RESURVEY 29-6

1/4 COR.



SEE MAP 30 6 4

F.B. 103 R. 61 → 65

SEE MAP 30 6 8

495,000

1,218,000

30 6 5
12/83 BB