

This map was prepared for assessment purpose only.

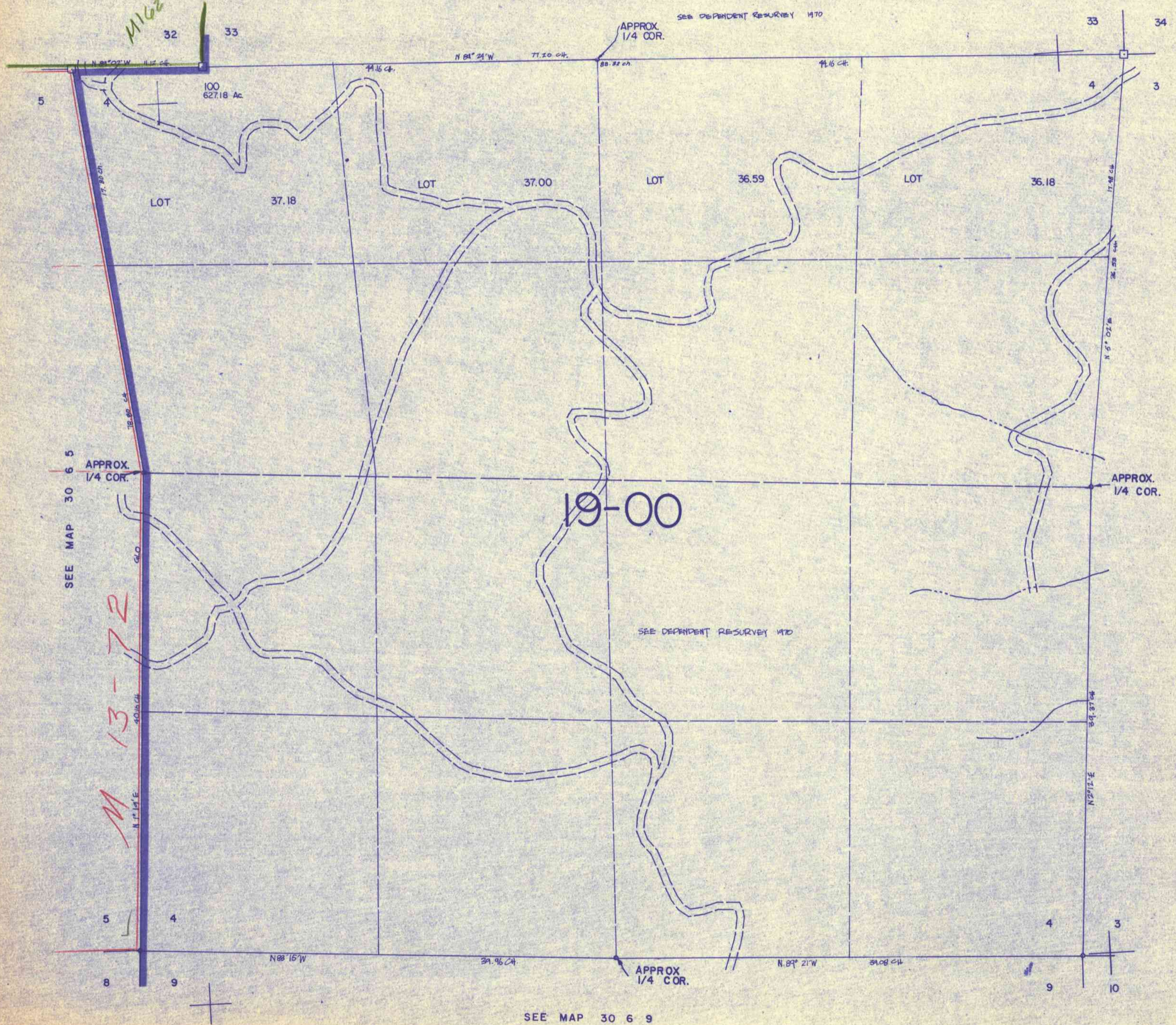
SECTION 4 T.30S. R. 6 W. W.M.
DOUGLAS COUNTY

30 6 4

1" = 400'

SEE MAP 29 6

SEE DEPENDENT RESURVEY 1170



499,000

SEE MAP 30 6 5

SEE MAP 30 6 3

SEE MAP 30 6 9

30 6 4

12/83 BS

1,218,000