

SECTION 3 T.30S. R. 6 W. W.M.

30 6 3

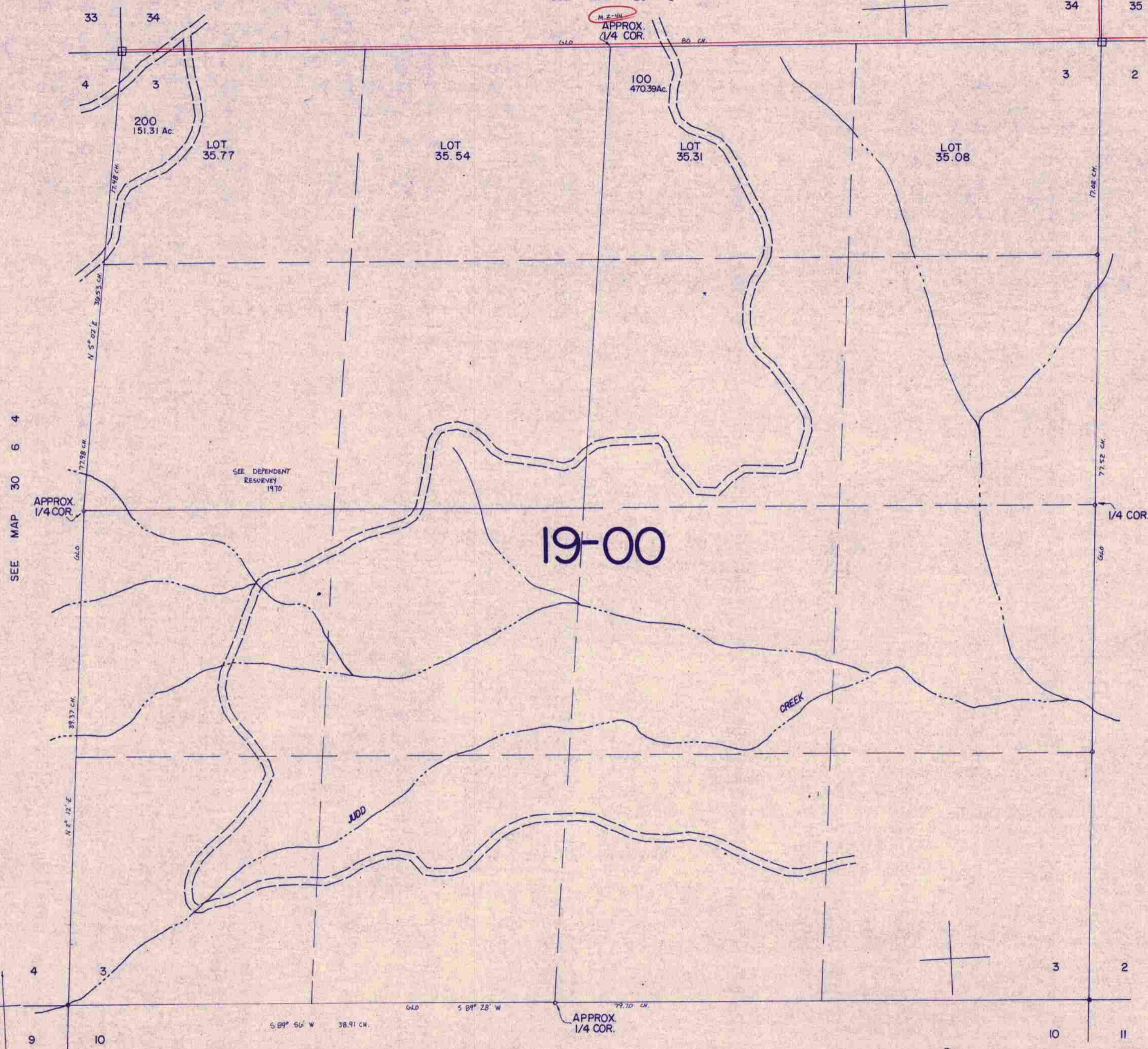
This map was prepared for assessment purposes only

DOUGLAS COUNTY

1" = 400'

SEE MAP 29 6

APPROX. 1/4 COR.



19-00

SEE MAP 30 6 4

SEE MAP 30 6 2

SEE MAP 30 6 10

1,227,500

494,000

30 6 3

12/03