

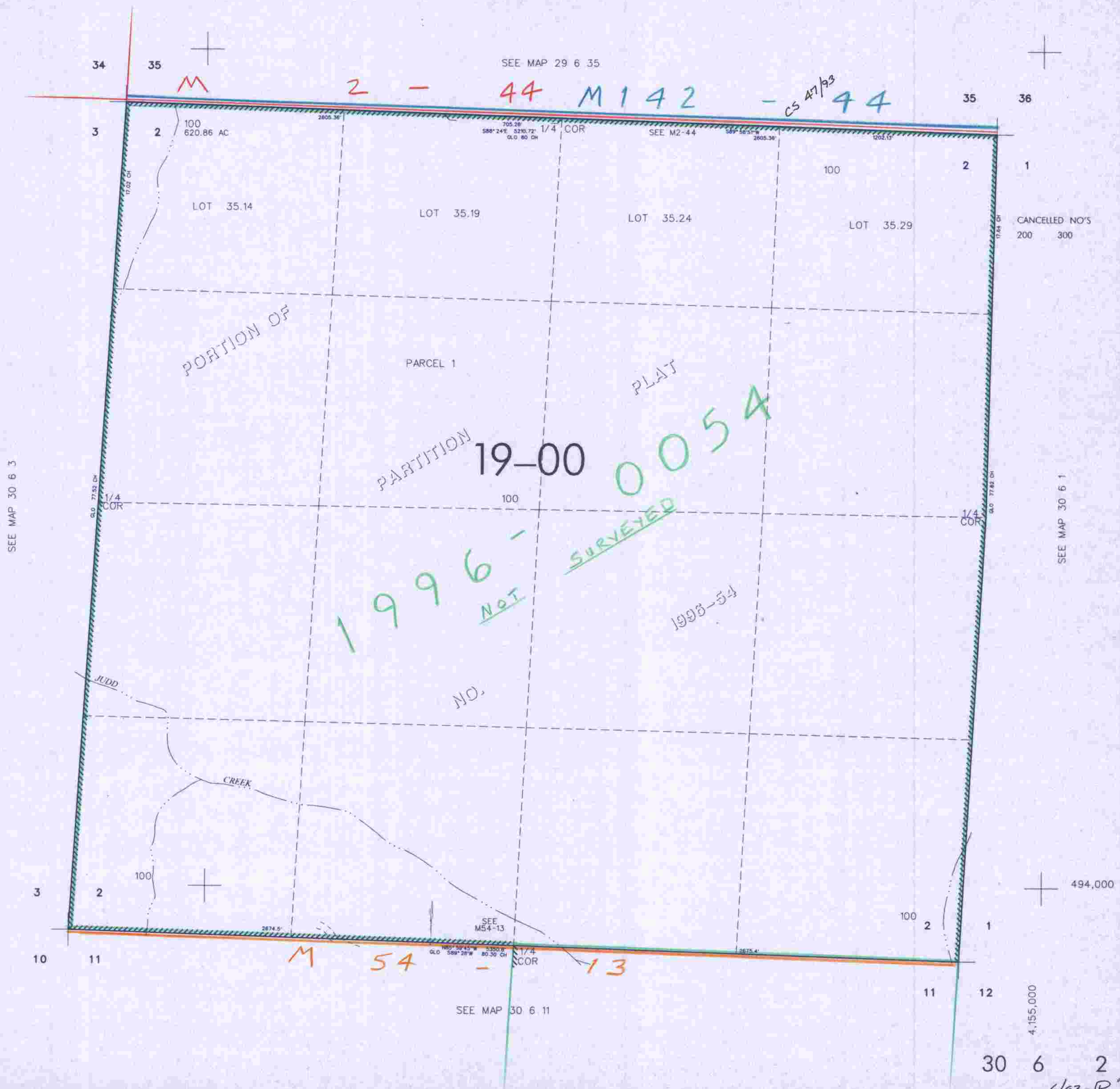
THIS MAP WAS PREPARED FOR  
ASSESSMENT PURPOSE ONLY

SEC. 2 T.30S. R.6 W. W.M.  
DOUGLAS COUNTY

REVISED ON  
7-1-96

30 6 2

1"=400'



CANCELLED NO'S  
200 300

SEE MAP 30 6 1

494,000

4,155,000

30 6 2

6/03-SP mo