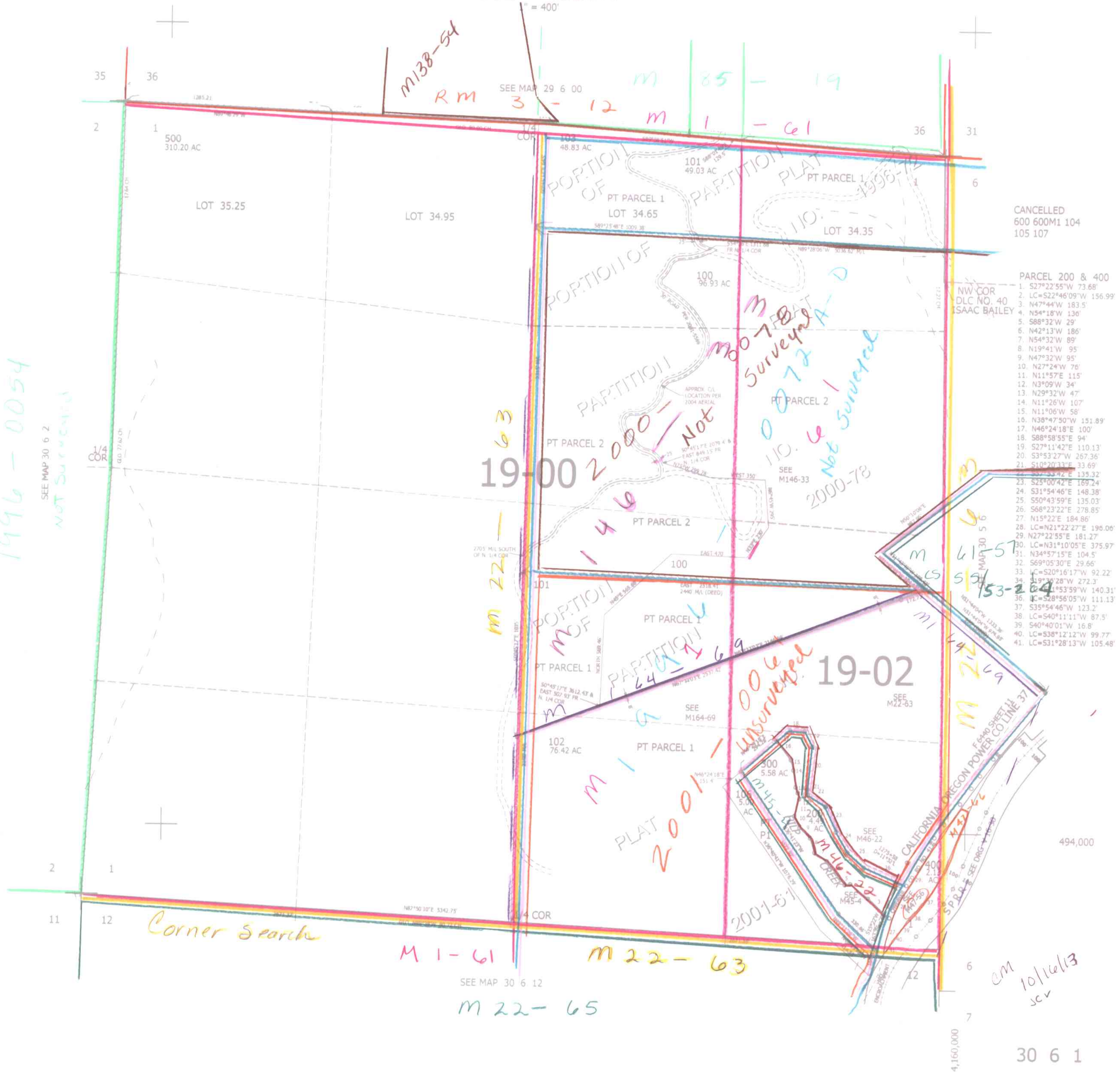


THIS MAP WAS PREPARED FOR ASSESSMENT PURPOSE ONLY.

SEC.1 T30S. R.6W. W.M. DOUGLAS COUNTY

REVISED ON 8-6-13

30 6 1



1996-0054  
SEE MAP 30 6 2  
NOT SURVEYED

19-00 2000-2  
Not Surveyed

19-02  
Not Surveyed

CANCELLED  
600 600M1 104  
105 107

- PARCEL 200 & 400  
DLC NO. 40  
ISAAC BAILEY
1. S27°22'55"W 73.68'
  2. LC=S22°46'09"W 156.99'
  3. N47°44'W 183.5'
  4. N54°18'W 136'
  5. S88°32'W 29'
  6. N42°13'W 186'
  7. N54°32'W 89'
  8. N19°41'W 95'
  9. N47°32'W 95'
  10. N27°24'W 76'
  11. N11°57'E 115'
  12. N3°09'W 34'
  13. N29°32'W 47'
  14. N11°26'W 107'
  15. N11°06'W 58'
  16. N38°47'50"W 151.89'
  17. N46°24'18"E 100'
  18. S88°58'55"E 94'
  19. S27°11'42"E 110.13'
  20. S3°53'27"W 267.36'
  21. S10°20'33"E 33.69'
  22. S27°22'55"E 135.32'
  23. S25°00'42"E 169.24'
  24. S31°54'46"E 148.38'
  25. S50°43'59"E 135.03'
  26. S68°23'22"E 278.85'
  27. N15°22'E 184.86'
  28. LC=N21°22'27"E 196.00'
  29. N27°22'55"E 181.27'
  30. LC=N31°10'05"E 375.97'
  31. N34°57'15"E 104.5'
  32. S69°05'30"E 29.66'
  33. LC=S20°16'17"W 92.22'
  34. S19°28'28"W 272.3'
  35. N41°53'59"W 140.31'
  36. LC=S28°56'05"W 111.13'
  37. S35°54'46"W 123.2'
  38. LC=S40°11'11"W 87.5'
  39. S40°40'01"W 16.8'
  40. LC=S38°12'12"W 99.77'
  41. LC=S31°28'13"W 105.48'

Corner Search

M 1-61

M 22-63

M 22-65

cm  
10/16/13  
scv

30 6 1