

THIS MAP WAS PREPARED FOR ASSESSMENT PURPOSE ONLY. Upper Left: 123°17'15"W 42°55'37"N 4174862E 471728N ft

NW1/4 NW1/4 SEC.34 T.30S. R.05W. W.M. DOUGLAS COUNTY SEE 1"=100' MAP 3005W27CC

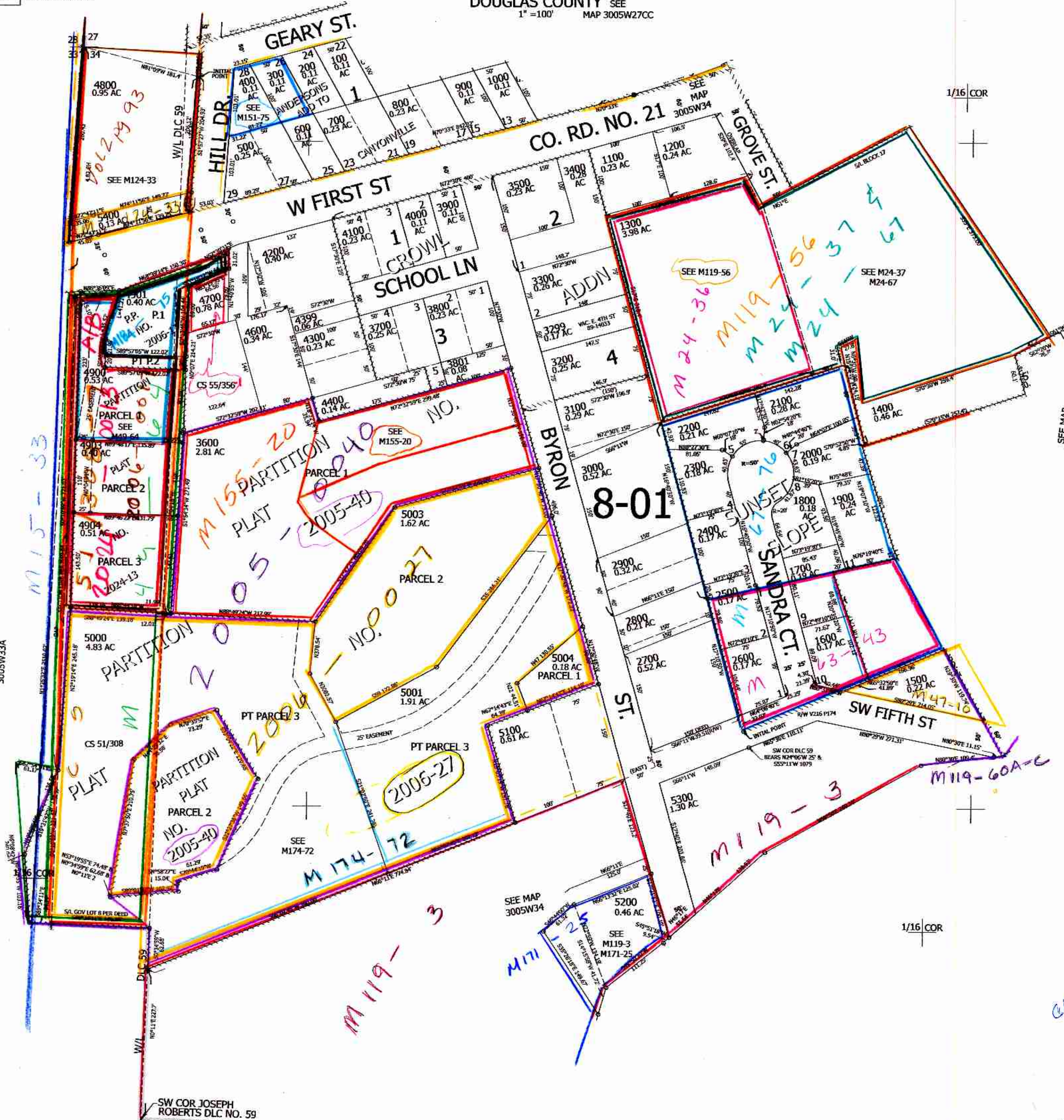
Date Exported 2024-04-02

300534BB Canyonville

CANCELLED NOS: 4101 100M1 200M1 300M1 400M1 500M1 600M1 700M1 800M1 900M1 1000M1 199M1 5002 4500 5005 1300A1 4902

SEE MAP 3005W27CD

SEE MAP 3005W34BA



SEE MAP 3005W33AA

SEE MAP 3005W33A

1/16 COR

1/16 COR

SW COR JOSEPH ROBERTS DLC NO. 59

AM 4/21/5 RV

300534BB Canyonville

Lower Right: 123°16'48"W 42°55'21"N 4176824E 469990N ft